

WAAS CH <b>78220</b> <b>W12A</b>	APP CRS <b>117°</b>	Rwy Idg <b>3449</b> TDZE <b>940</b> Apt Elev <b>940</b>
--	------------------------	---

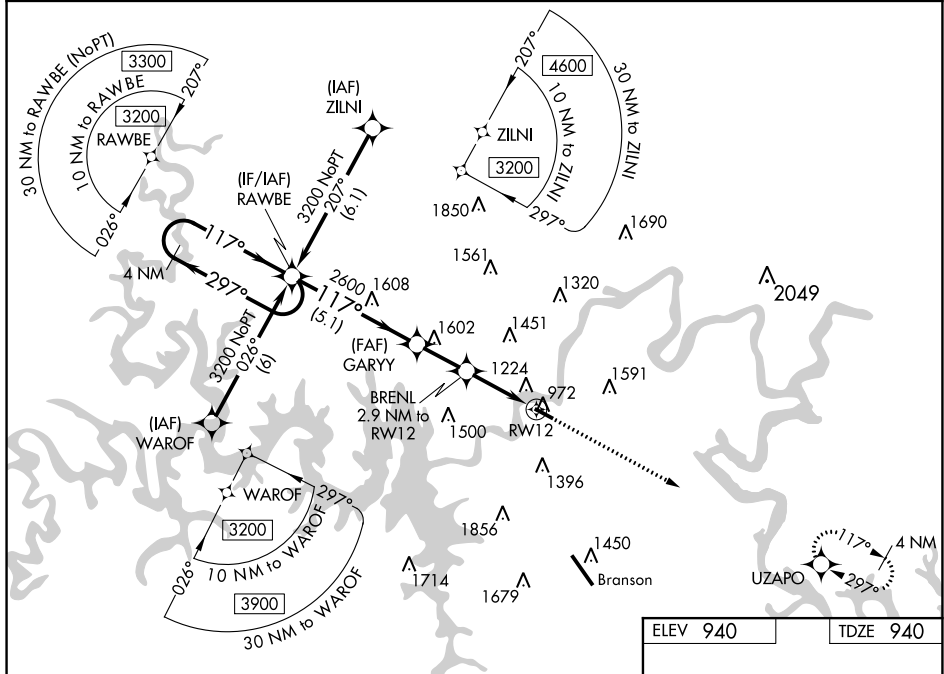
# RNAV (GPS) RWY 12

## M GRAHAM CLARK DOWNTOWN (PLK)

**V** Baro-VNAV NA when using Branson altimeter setting. For uncompensated Baro-VNAV systems, **A** LNAV/VNAV NA below -16°C (4°F) or above 54°C (130°F). DME/DME RNP-0.3 NA. VDP NA with Branson altimeter setting. Obtain local altimeter setting on CTAf; when not received, use Branson altimeter setting and increase all DA 65 feet and all MDA 80 feet; increase LPV all Cats visibility ½ mile and LNAV/VNAV all Cats visibility ¼ mile.

**MISSED APPROACH:**  
Climb to 3200 direct  
LIZARD and hold

SPRINGFIELD APP CON  
**126.35**

UNICOM  
122.7 (CTAF) **L**

4 NM Holding Pattern RAWBE

\*LNAV only

3200 297° 117° 117°

GP 3.10° TCH 40

GARYY 2600

BRENL 2.9 NM to RW12

\*1920

\*1.7 NM to RW12

RW12

5.1 NM 2 NM 1.2 NM 1.7 NM

CATEGORY	A	B	C	D
LPV DA	1140-3/4	200 (200-3/4)		NA
LNAV/VNAV DA	1416-1 5/8	476 (500-1 5/8)		NA
LNAV MDA	1540-1	600 (600-1)		NA
CIRCLING	1560-1	620 (700-1)		NA

Diagram illustrating the layout of Runway 12-30 and its connection to Runway 12 (RW12). The diagram shows a 117° angle between the centerline of RW12 and the centerline of Runway 12-30. Runway 12-30 is labeled with dimensions 3738 X 100. A 250 ft taxiway is shown connecting the two runways. The diagram also includes a star symbol indicating the runway's orientation and a north arrow pointing towards the top right.