

WAAS CH 72732 W22A	APP CRS 217°	Rwy Idg TDZE 869 Apt Elev 869	6497
--	------------------------	---	-------------

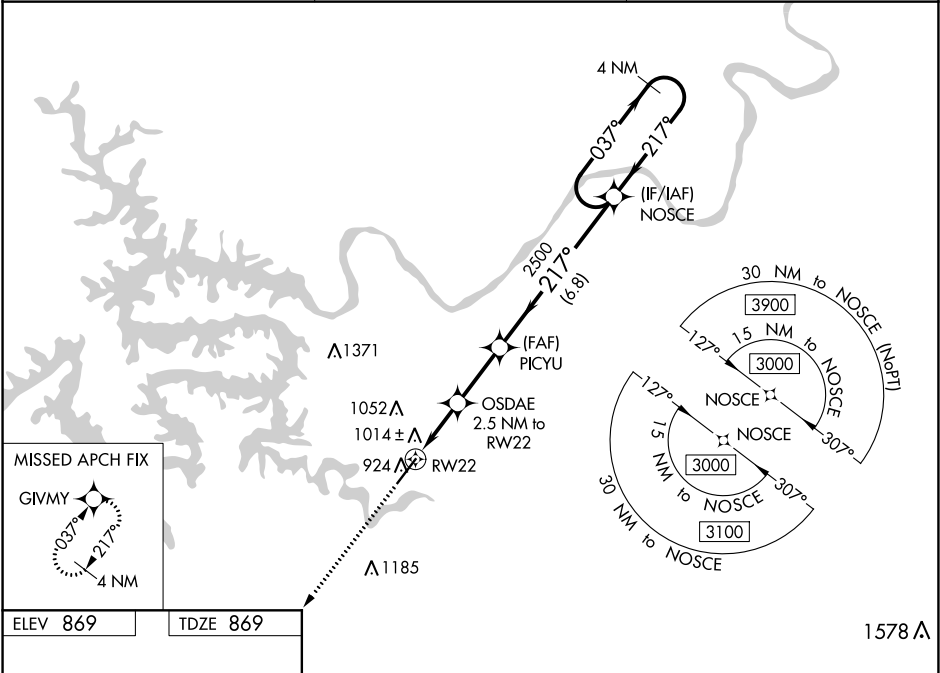
RNAV (GPS) RWY 22

LEE C FINE MEMORIAL (AIZ)

⚠ For uncompensated Baro-VNAV systems, LNAV/VNAV NA below -16°C (4°F) or above 54°C (130°F).
⚠ DME/DME RNP-0.3 NA. Helicopter visibility reduction below 1 SM NA. When local altimeter setting not received, use Camdenton altimeter setting and increase all DA 50 feet, all MDA 60 feet, LNAV/VNAV all Cats visibility ½ mile and LNAV Cat C visibility ¼ mile. Baro-VNAV and VDP NA with Camdenton altimeter setting.

MISSED APPROACH:
Climb to 3100 direct GIVMY and hold.

AWOS-3PT 135.325	MIZZU APP CON 124.1 353.7	UNICOM 122.8 (CTAF) 0
----------------------------	-------------------------------------	---------------------------------



ELEV 869

TDZE 869

3100

GIVMY

OSDAE 2.5 NM to RW22

PICYU 2500

NOSCE

4 NM Holding Pattern

217° to RW22

217°

037°

3000

1700*

2500

GP 3.00°

TCH 42

1.2 NM

1.3 NM

2.5 NM

6.8 NM

933 A

6497 x 100

☆ 913

Λ 935

MIRL Rwy 4-22

CATEGORY	A	B	C	D
LPV DA	1119-1 250 (300-1)			NA
LNAV/VNAV DA	1164-1 295 (300-1)			NA
LNAV MDA	1280-1	411 (500-1)	1280-1½ 411 (500-1½)	NA
CIRCLING	1320-1	451 (500-1)	1380-1½ 511 (600-1½)	NA