

WAAS CH 77719 W20A	APP CRS 205°	Rwy Idg 5000 TDZE 884 Apt Elev 892
--	------------------------	---

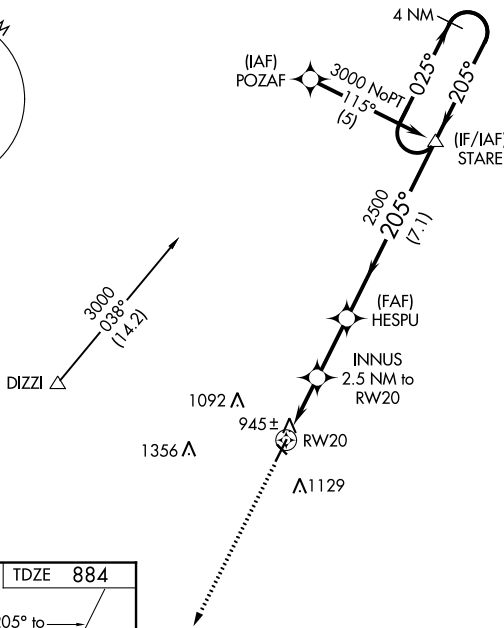
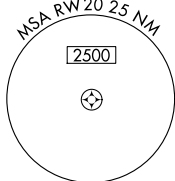
RNAV (GPS) RWY 20
NEVADA MUNI (NVD)

▼ DME/DME RNP-0.3 NA. Rwy 20 helicopter visibility reduction below $\frac{3}{4}$ SM NA.
▲ NA Baro-VNAV and VDP NA when using Joplin Rgnl altimeter setting. For uncompensated Baro-VNAV systems, LNAV/VNAV NA below -16°C (4°F) or above 54°C (130°F). When local altimeter setting not received, use Joplin Rgnl altimeter setting and increase all DA 112 feet and all MDA 120 feet, increase LPV and LNAV/VNAV all Cws visibility $\frac{1}{4}$ mile and increase LNAV Cat C visibility $\frac{1}{4}$ mile. Circling NA to Rwy 13-31.

MISSED APPROACH: Climb to 3000
direct KIFGE and hold.

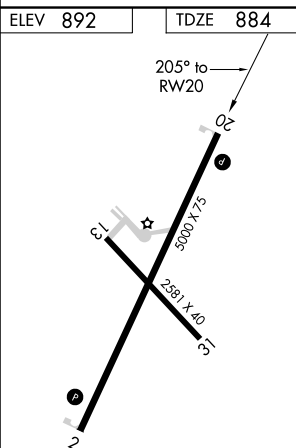
AWOS-3
119.175

KANSAS CITY CENTER
125.55 327.0

UNICOM
122.8 (CTAF) 

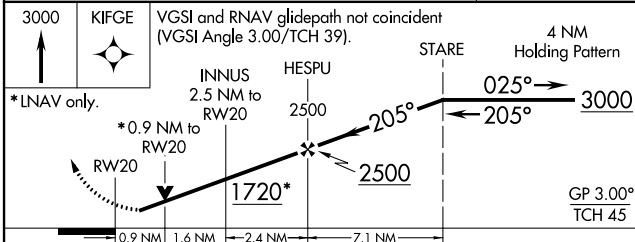
Δ1483

MISSED APCH FIX



MIRL Rwy 2-20 **L**
REIL Rwys 2 and 20 **L**

VGSI and RNAV glidepath not coincident (VGSI Angle 3.00/TCH 39).



CATEGORY	A	B	C	D
LPV DA	1139-1 255 (300-1)			NA
LNAV/ VNAV DA	1216-1¼ 332 (400-1¼)			NA
LNAV MDA	1200-1 316 (400-1)		1200-1½ 316 (400-1½)	NA
CIRCLING	1260-1 368 (400-1)	1440-1 548 (600-1)	1440-1½ 548 (600-1½)	NA