

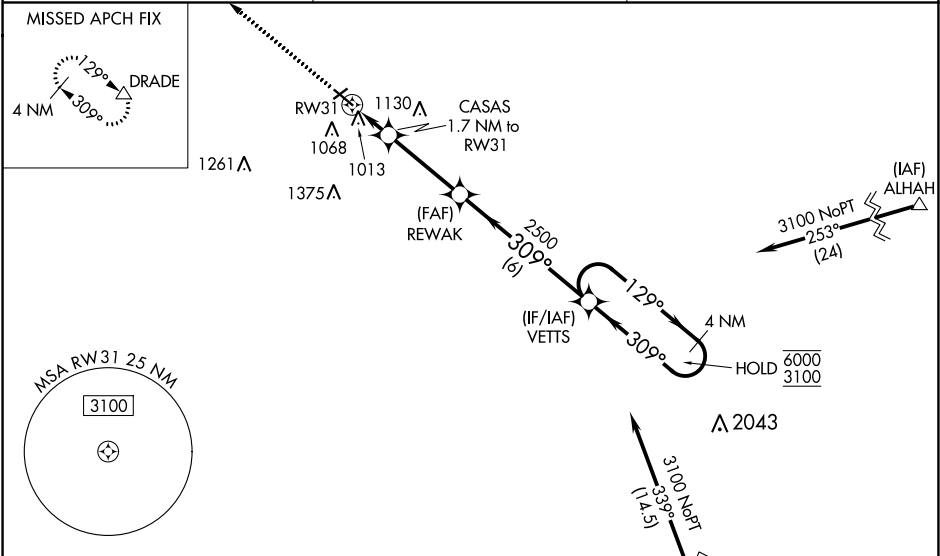
WAAS CH <b>61321</b> <b>W31A</b>	APP CRS <b>309°</b>	Rwy Idg <b>5001</b> TDZE <b>867</b> Apt Elev <b>867</b>
--	------------------------	---

RNAV (GPS) RWY 31

OMAR N BRADLEY (MBY)

RNP APCH.	<p>⚠ NA</p> <p>Circling to Rwy 5, 23 NA at night. Rwy 31 helicopter visibility reduction below <math>\frac{3}{4}</math> SM NA. Baro-VNAV NA when using Columbia altimeter setting. For uncompensated Baro-VNAV systems, LNAV/VNAV NA below -16°C or above 54°C. VDP NA when using Columbia altimeter setting: increase LPV DA to 1212 feet and all visibilities <math>\frac{1}{8}</math> SM; increase LNAV/VNAV DA to 1278 feet and all visibilities <math>\frac{1}{4}</math> SM; increase all MDA 100 feet and visibility Cat C <math>\frac{1}{4}</math> SM.</p>	MISSED APPROACH: Climb to 2900 direct DRADE and hold.
-----------	---	---

AWOS-3P <b>120.025</b>	KANSAS CITY CENTER <b>125.25 235.975</b>	UNICOM <b>122.7 (CTAF) 0</b>
---------------------------	---	---------------------------------



ELEV <b>867</b>	TDZE <b>867</b>
-----------------	-----------------

