

APP CRS 132°	Rwy Idg 4000 TDZE 1076 Apt Elev 1076
------------------------	---

RNAV (GPS) RWY 13
OELWEIN MUNI (OLZ)

RNP APCH.

T Circling NA to Rwy 18 and 36.
Rwy 13 helicopter visibility reduction below $\frac{3}{4}$ SM NA.

MISSED APPROACH: Climb to 2000 then climbing right turn to 2900 direct UDCEK and hold.

AWOS-3 119.675	WATERLOO APP CON ★ 118.9 251.15	UNICOM 122.8 (CTAF) 0
--------------------------	---	--

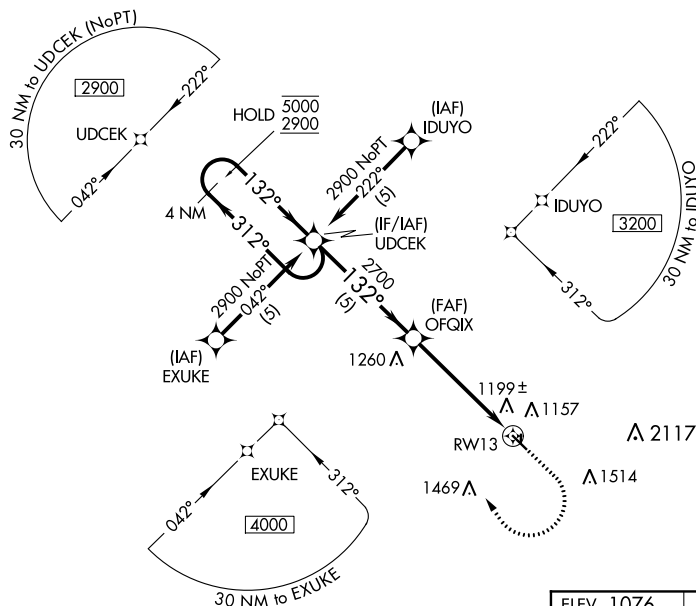


Diagram illustrating the proposed rail alignment for the MRL Rwy 13-31. The alignment is shown as a dashed line with a 0.4% UP slope. The diagram includes dimensions: 4000' x 75' for the main rectangular area, 1822' x 85' for a smaller section, and 36' for a width. A 132° angle is indicated to the right of the alignment. The diagram is titled "ELEV 1076" and "TDZE 1076".

MRL Rwy 13-31

REIL Rwy 13 and 31

RWY 13

CATEGORY	A	B	C	D
LNAV MDA	1460-1	384 (400-1)	1460-1½ 384 (400-1½)	1460-1¼ 384 (400-1¼)
CIRCLING	1500-1 424 (500-1)	1540-1 464 (500-1)	1540-1½ 464 (500-1½)	1640-2 564 (600-2)