

APP CRS 179°	Rwy Idg TDZE Apt Elev	5000 1316 1321
------------------------	-----------------------------	---

RNAV (GPS) RWY 18

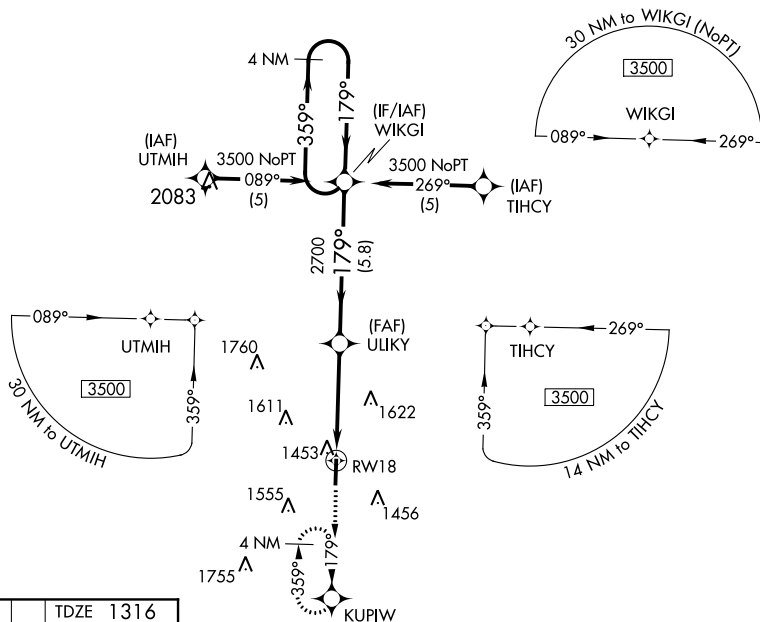
FLOYD W JONES LEBANON (LB0)

T When local altimeter setting not received, use Springfield-Branson National
altimeter setting and increase all DA/MDA 120 feet.

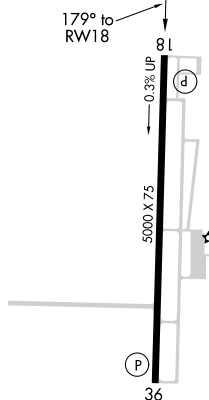
A NA Baro-VNAV NA when using Springfield-Branson National altimeter setting.
Baro-VNAV NA below -17° C (1° F). DME/DME RNP-0.3 NA.

MISSED APPROACH: Climb to 3500
direct KUPIW and hold.

AWOS-3PT 118,975	SPRINGFIELD APP CON 121.1 290.5	CLNC DEL 123,725	UNICOM 122.8 (CTAF) 0
----------------------------	---	----------------------------	---------------------------------

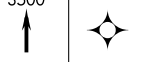


ELEV 1321		TDZE 1316
-----------	--	-----------

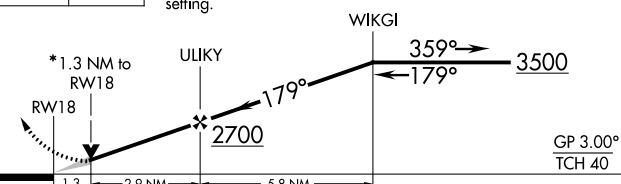
REIL Rwy 18 and 36 **L**

MIRL Rwy 18-36

3500	KUPIW	VGSI and descent angles not coincident.
------	-------	---



* LNAV only, VDP NA when using Springfield-Branson National altimeter setting.

4 NM
Holding Pattern

CATEGORY		A		B		C		D	
GLS PA	DA	NA							
RNAV/ VNAV	DA	1937-2 1/4 621 (700-2 1/4)							
RNAV MDA		1760-1 444 (500-1)				1760-1 1/4 444 (500-1 1/4)			
CIRCLING		1820-1 499 (500-1)				1820-1 1/2 499 (500-1 1/2)		1980-2 659 (700-2)	