

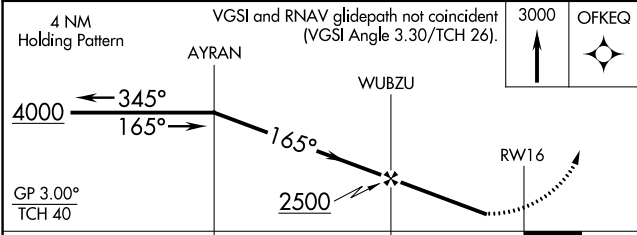
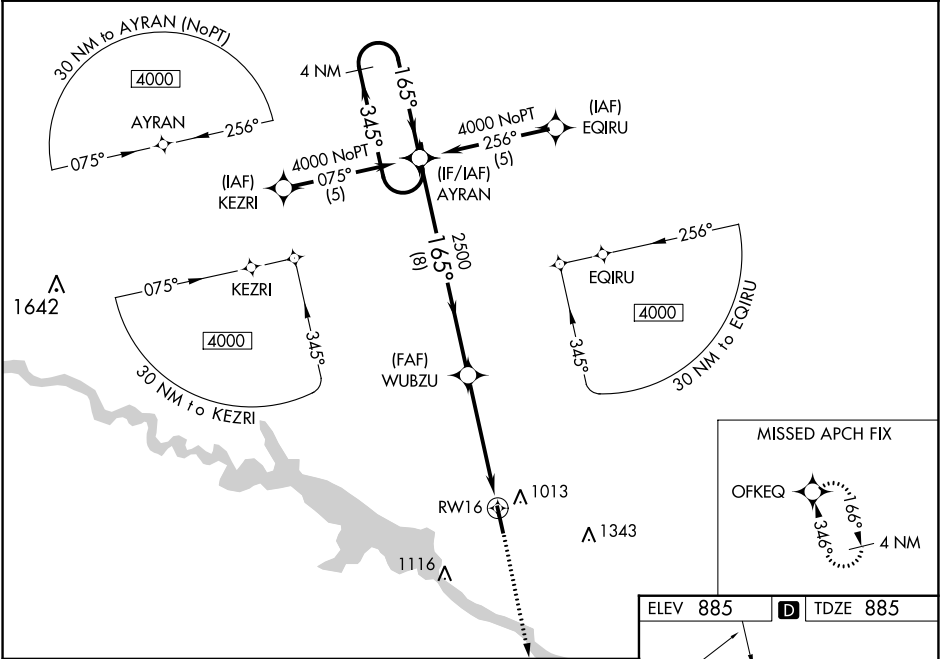
WAAS CH 77610 W16A	APP CRS 165°	Rwy Idg TDZE 885 Apt Elev 885	5000 885 885
--	------------------------	---	---

RNAV (GPS) RWY 16
PELLA MUNI (PEA)

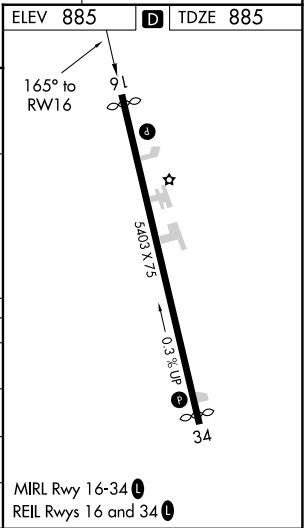
⚠ DME/DME RNP -0.3 NA. Visibility reduction by helicopters NA.
Baro-VNAV NA when using Knoxville altimeter setting.
For uncompensated Baro-VNAV systems, LNAV/VNAV NA below -16°C (4°F) or above 54°C (130°F).
When local altimeter setting not received, use Knoxville altimeter setting and increase all DA 29 feet and all MDA 40 feet.

MISSED APPROACH: Climb to 3000 direct OFKEQ and hold.

AWOS-3 118.875	DES MOINES APP CON 123.9 307.15	UNICOM 122.8 (CTAF) 1
--------------------------	---	---------------------------------



CATEGORY	A	B	C	D
LPV DA	1232-1¼	347 (400-1¼)		NA
LNAV/VNAV DA	1288-1½	403 (500-1½)		NA
LNAV MDA	1360-1	475 (500-1)	1360-1¼ 475 (500-1¼)	NA
CIRCLING	1380-1	495 (500-1)	1440-1½ 555 (600-1½)	NA



NC-3, 31 DEC 2020 to 28 JAN 2021

NC-3, 31 DEC 2020 to 28 JAN 2021