

WAAS CH 70413 W32A	APP CRS 320°	Rwy Idg 3899 TDZE 782 Apt Elev 783
--	------------------------	---

RNAV (GPS) RWY 32
CHILlicothe MUNI (CHT)

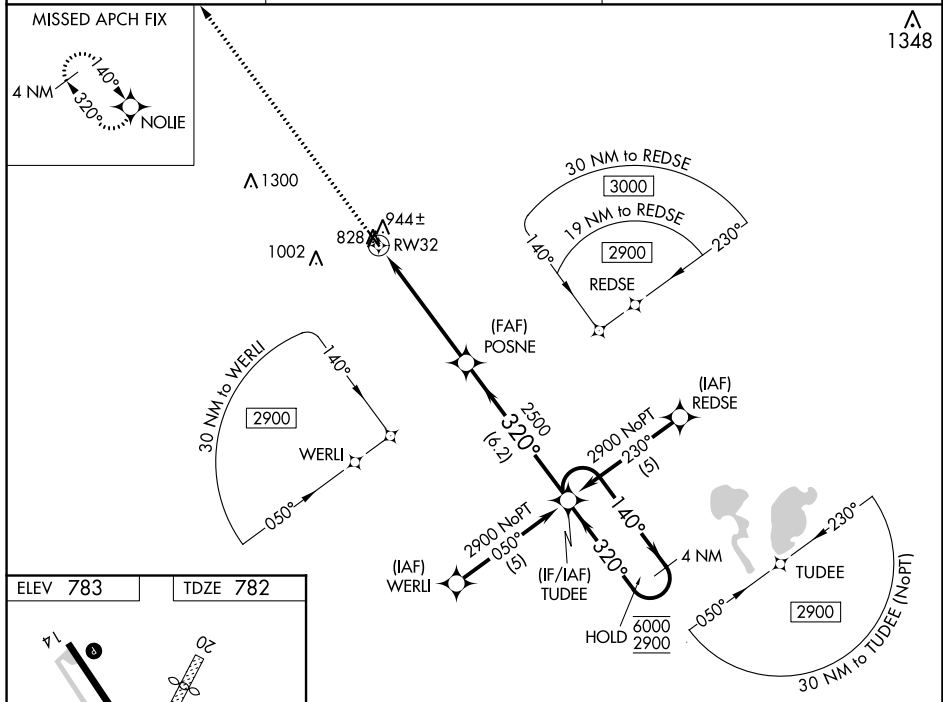
CHILLICOTHE MUNI (CHT)

RNP APCH.

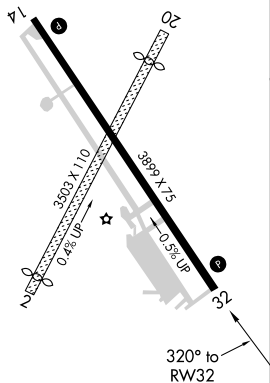
V Baro-VNAV and VDP NA when using Kansas City Intl altimeter setting.
A NA Rwy 32 helicopter visibility reduction below $\frac{3}{4}$ SM NA. For uncompensated Baro-VNAV systems, LNAV/VNAV NA below -16°C or above 54°C. When local altimeter setting not received, use Kansas City Intl altimeter setting and increase LPV DA to 1329 and LNAV/VNAV DA to 1335 and all MDA 200 feet, increase all LPV visibilities $\frac{3}{4}$ SM and LNAV/VNAV visibilities $\frac{1}{2}$ SM.

MISSED APPROACH: Climb to 2900 direct NOLE and hold.

AWOS-3 118.175	KANSAS CITY CENTER 125.25 235.975	UNICOM 122.8 (CTAF) 0
--------------------------	---	---------------------------------



ELEV 783		TDZE 782
----------	--	----------

MIRL Rwy 14-32 **L**

REIL Rwys 14 and 32 L

CHILLICOTHE, MISSOURI

Amdt 1B 18JUL19

39°47'N-93°30'W

CHILICOTHE MUNI (CHT)
RNAV (GPS) RWY 32

RNAV (GPS) RWY 32