

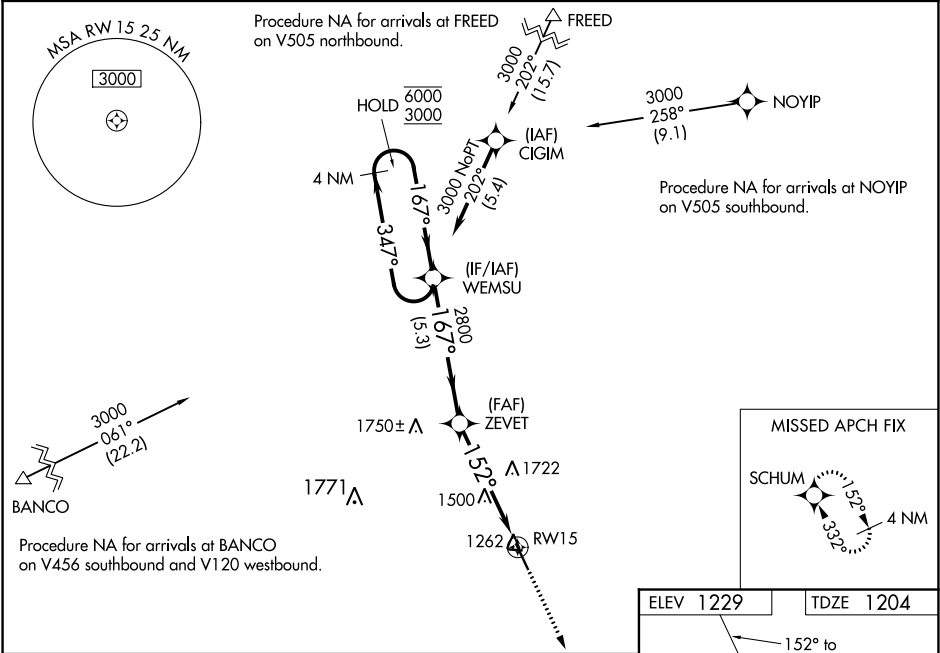
WAAS CH 90428 W15A	APP CRS 152°	Rwy Idg 5196 TDZE 1204 Apt Elev 1229
--	------------------------	---

RNAV (GPS) RWY 15

FOREST CITY MUNI (FXY)

RNP APCH.	MISSED APPROACH: Climb to 3000 direct to SCHUM and hold.
<p>⚠ Circling to Rwy 9, 27 and 33 NA at night. For uncompensated Baro-VNAV systems, LNAV/VNAV NA below -29°C or above 54°C. When local altimeter setting not received, use Mason City altimeter setting and increase all DA 34 feet and all MDA 40 feet, increase LNAV Cats C and D visibility to 1½ SM, and Circling Cat C visibility to 1¾ SM. VDP and Baro-VNAV NA when using Mason City altimeter setting.</p>	

AWOS-3 123.925	MINNEAPOLIS CENTER 127.3 257.675	UNICOM 122.8 (CTAF) 0
--------------------------	--	---------------------------------



4 NM Holding Pattern WEMSU		VGSI and RNAV glidepath not coincident (VGSI Angle 3.00/TCH 28).		3000	SCHUM
6000 ← 347° 3000 ← 167°		ZEVET		* LNAV only.	
GP 3.00° TCH 40		2800		* 1.7 NM to RWY 15	
		2800		RWY 15	
		5.3 NM		3.2 NM	
				1.7 NM	
CATEGORY	A	B	C	D	
LPV DA		1454-1	250 (300-1)		
LNAV/VNAV DA		1482-1	278 (300-1)		
LNAV MDA	1760-1	556 (600-1)	1760-1½	556 (600-1½)	
CIRCLING	1760-1	531 (600-1)	1760-1½ 531 (600-1½)	1820-2 591 (600-2)	

