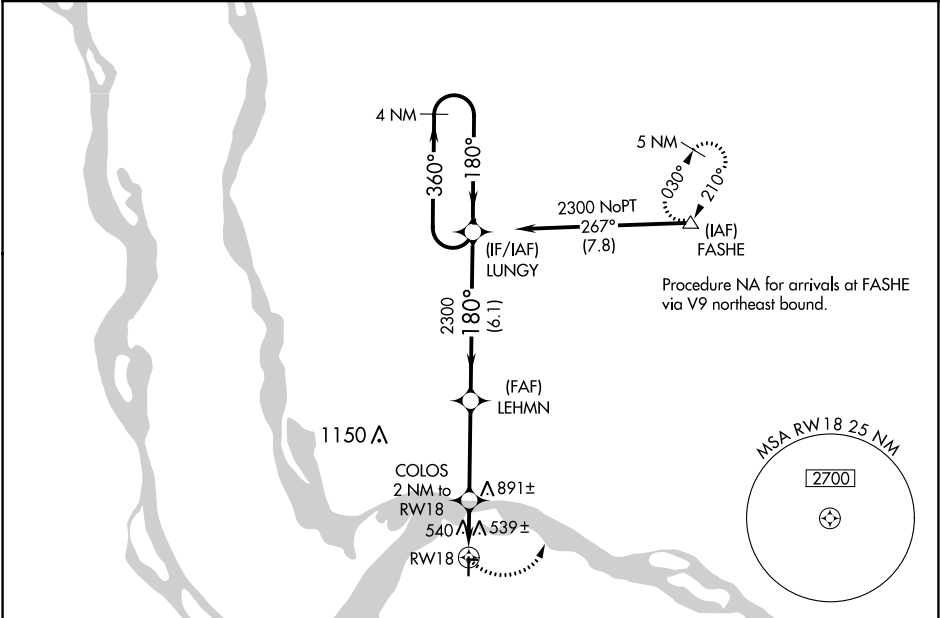




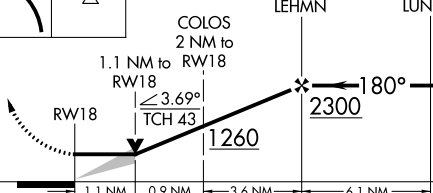
APP CRS 180°	Rwy Idg	3800
	TDZE	436
	Apt Elev	436

RNAV (GPS) RWY 18
ST CHARLES COUNTY SMARTT (S'E'T)

<p>▼ DME/DME RNP-0.3 NA. ▲ If local altimeter setting not received, use St Louis Lambert Intl altimeter setting and increase all MDAs 60 feet. VDP NA with St Louis Lambert Intl altimeter setting.</p>	<p>MISSED APPROACH: Climbing left turn to 2700 direct FASHE and hold.</p>
---	---

ASOS 118.075	ST. LOUIS APP CON 124.2 353.9	CLNC DEL 121.6	UNICOM 122.7 (CTAF) 0
------------------------	---	--------------------------	--



2700		FASHE		VGSIs and descent angles not coincident (VGSIs Angle 3.00/TCH 43).		
						
						
CATEGORY	A		B		C	D
RNAV MDA	840-1 404 (500-1)		840-1¼ 404 (500-1¼)		NA	
CIRCLING	840-1 404 (500-1)		900-1 464 (500-1)		NA	

ELEV 436

TDZE 436

180° to RW18

81

27

2000 X 75

3600 X 75

36

REIL Rwy 18 0

MIRL Rwy 9-27 and 18-36 0

NC-3, 31 DEC 2020 to 28 JAN 2021

NC-3, 31 DEC 2020 to 28 JAN 2021