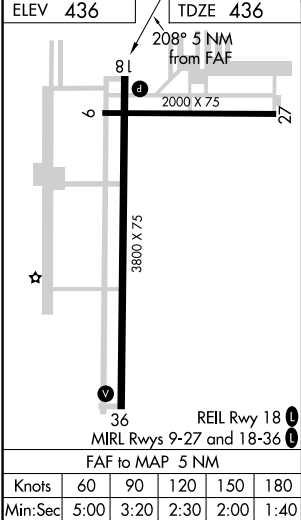
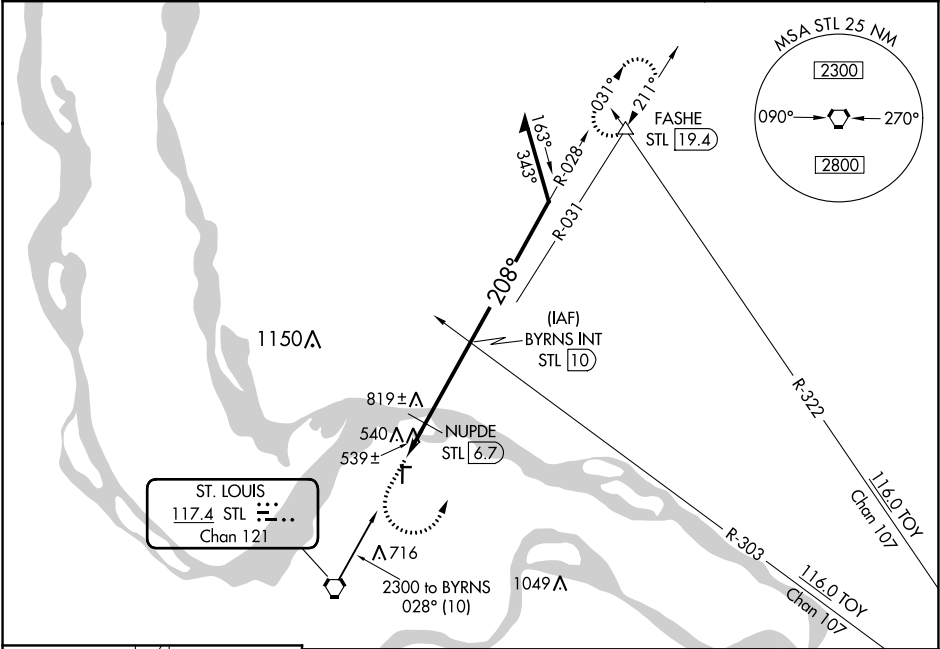


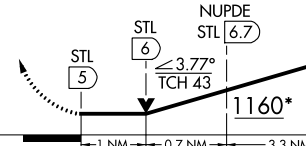
VORTAC STL	APP CRS	Rwy Idg	3800
117.4	208°	TDZE	436
Chan 121		Apt Elev	436

VOR RWY 18
ST CHARLES COUNTY SMARTT (S'E/T)

▼ If local altimeter setting not received, use St Louis Lambert Intl altimeter setting and increase all MDAs 60 feet. Straight-in minimums NA with St Louis Lambert Intl altimeter setting.	MISSED APPROACH: Climb to 1000 then climbing left turn to 2700 via heading 360° and STL R-031 to FASHE INT/19.4 DME and hold.
---	---

ASOS 118.075	ST. LOUIS APP CON 124.2 353.9	CLNC DEL 121.6	UNICOM 122.7 (CTAF) 0
-----------------	----------------------------------	-------------------	--------------------------



1000	2700	STL	FASHE	
↑	hdg 360°	R-031	△	
VGSI and descent angles not coincident (VGSI Angle 3.00/TCH 43).				
				
*1220 when using St Louis Lambert Intl altimeter setting.				
CATEGORY	A	B	C	D
S-18	1160-1	724 (800-1)	1160-2 724 (800-2)	NA
CIRCLING	1160-1	724 (800-1)	1160-2 724 (800-2)	NA
NUPDE FIX MINIMUMS				
S-18	800-1 364 (400-1)			NA
CIRCLING	840-1 404 (500-1)	900-1 464 (500-1)	900-1½ 464 (500-1½)	NA

NC-3, 31 DEC 2020 to 28 JAN 2021

NC-3, 31 DEC 2020 to 28 JAN 2021