

WAAS CH <b>90541</b> <b>W20A</b>	APP CRS <b>200°</b>	Rwy Idg TDZE Apt Elev	<b>5000</b> <b>995</b> <b>996</b>
--	------------------------	-----------------------------	---

RNAV (GPS) RWY 20

SCHENCK FIELD (ICL)

RNP APCH.

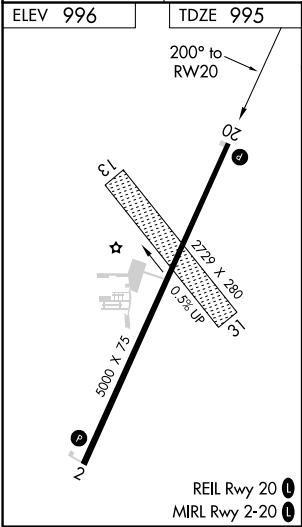
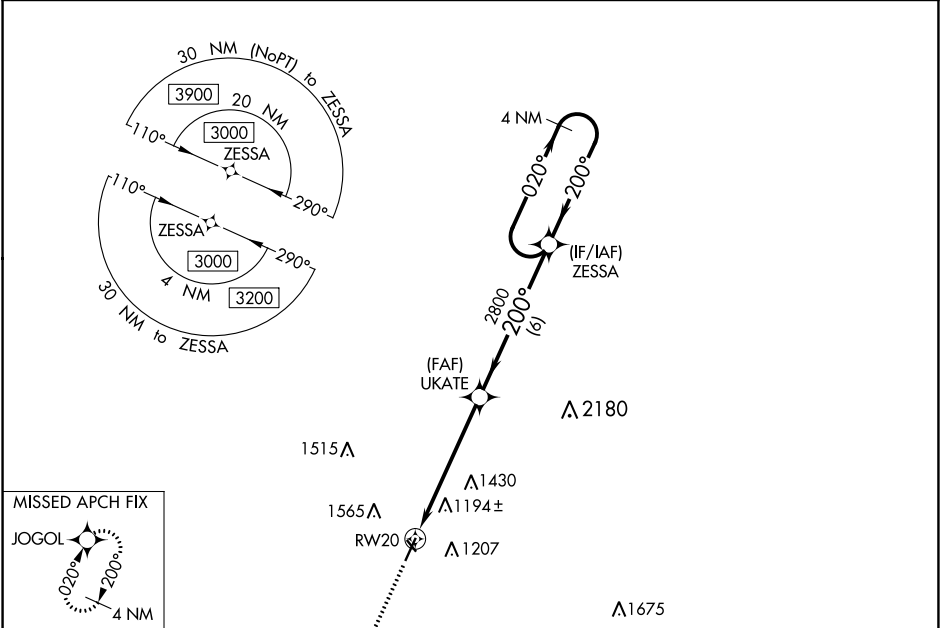
▼ For uncompensated Baro-VNAV systems, LNAV/VNAV NA below -1.6°C (4°F) or above 54°C (130°F).

▲ Circling NA west of Rwy 2-20. Circling NA to Rwys 13 and 31.

Rwy 20 helicopter visibility reduction below ¾ SM NA.

MISSED APPROACH:  
Climb to 3000 direct  
JOGOL and hold.

AWOS-3 <b>132.025</b>	MINNEAPOLIS CENTER <b>119.6 290.4</b>	UNICOM <b>122.8 (CTAF) 0</b>
--------------------------	--	---------------------------------



<div><div>3000</div><div>JOGOL</div></div>		<div><div>4 NM Holding Pattern</div><div><div><div><div>UKATE</div><div>2800</div></div><div><div>ZESSA</div><div>3000</div></div></div><div><div><div>020°</div><div>200°</div></div></div><div><div><div>1.4 NM</div><div>4.2 NM</div><div>6 NM</div></div><div><div>GP 3.00</div><div>TCH 30</div></div></div></div></div>			
<div><div>* LNAV only</div><div><div><div>RW20</div><div>1.4 NM to RW20</div></div></div></div>					
CATEGORY	A	B	C	D	
LPV DA	1261-1 266 (300-1)				
LNAV/VNAV DA	1489-1 <sup>3</sup> / <sub>8</sub> 494 (500-1 <sup>3</sup> / <sub>8</sub> )				
LNAV MDA	1460-1	465 (500-1)	1460-1 <sup>3</sup> / <sub>8</sub>	465 (500-1 <sup>3</sup> / <sub>8</sub> )	
<div><div>CIRCLING</div></div>	1500-1	504 (600-1)	1780-2 <sup>1</sup> / <sub>4</sub> 784 (800-2 <sup>1</sup> / <sub>4</sub> )	1780-2 <sup>1</sup> / <sub>2</sub> 784 (800-2 <sup>1</sup> / <sub>2</sub> )	

NC-3, 31 DEC 2020 to 28 JAN 2021

NC-3, 31 DEC 2020 to 28 JAN 2021