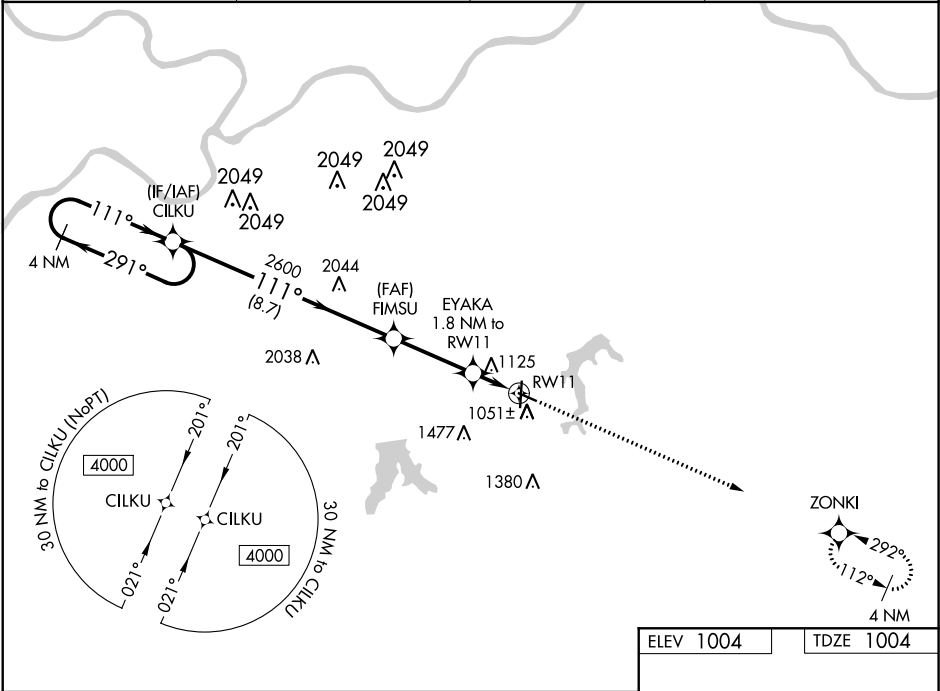


WAAS CH <b>99405</b> <b>W11A</b>	APP CRS <b>111°</b>	Rwy Idg TDZE Apt Elev	<b>4000</b> <b>1004</b> <b>1004</b>
--	------------------------	-----------------------------	---

RNAV (GPS) RWY 11  
LEE'S SUMMIT MUNI (LXT)

<p><b>▼</b> For uncompensated Baro-VNAV systems, LNAV/VNAV NA below -17°C (2°F) or above 54°C (130°F). Rwy 11 helicopter visibility reduction below ¾ SM NA. DME/DME RNP-0.3 NA.</p>	MISSED APPROACH: Climb to 3100 direct ZONKI and hold.
--	---

ASOS <b>124.175</b>	KANSAS CITY APP CON <b>118.4 307.35</b>	CLNC DEL <b>118.45</b>	UNICOM <b>122.8 (CTAF) 0</b>
------------------------	--	---------------------------	---------------------------------



<p>4 NM Holding Pattern</p> <p>CILKU</p> <p>FIMSU</p> <p>EYAKA 1.8 NM to RW11</p> <p>*1600</p> <p>*1.1 NM to RW11</p> <p>RW11</p> <p>GP 3.00° TCH 45</p>				
CATEGORY	A	B	C	D
LPV DA	1254-7/8 250 (300-7/8)			
LNAV/VNAV DA	1381-1¼ 377 (400-1¼)			
LNAV MDA	1380-1 376 (400-1)			
CIRCLING	1440-1 436 (500-1)	1540-1 536 (600-1)	1780-2¼ 776 (800-2¼)	1780-2½ 776 (800-2½)

