

WAAS CH 48805 W36A	APP CRS 001°	Rwy Idg 5501 TDZE 997 Apt Elev 1004
--	------------------------	--

RNAV (GPS) RWY 36

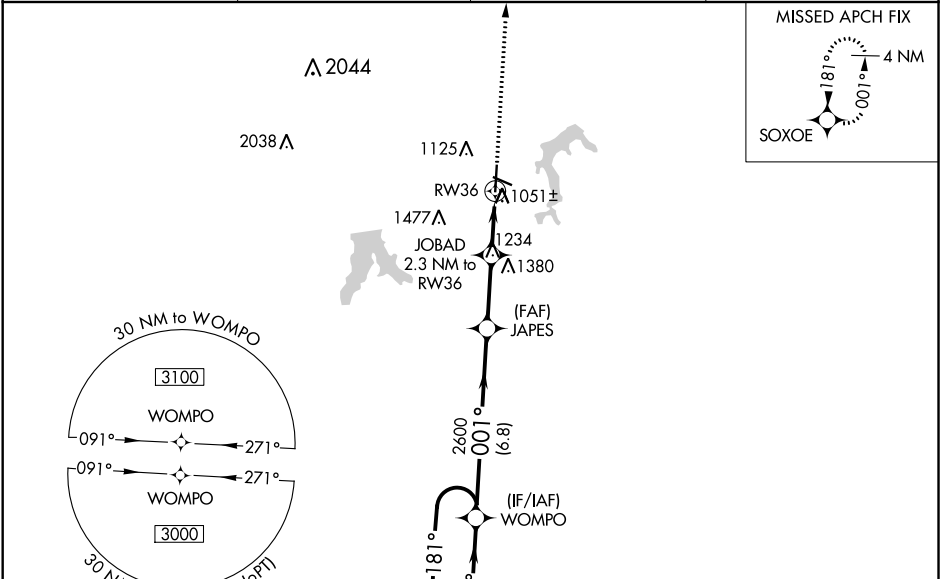
LEE'S SUMMIT MUNI (LXT)

⚠

For uncompensated Baro-VNAV systems, LNAV/VNAV NA below -17°C (2°F) or above 54°C (130°F). Rwy 36 helicopter visibility reduction below ¾ SM NA. DME/DME RNP-0.3 NA. VDP and Baro-VNAV NA when using Charles B. Wheeler Downtown altimeter setting. When local altimeter setting not received, use Charles B. Wheeler Downtown altimeter setting: increase LPV DA to 1374 feet and all visibilities ½ SM; increase LNAV/VNAV to 1367 feet and all visibilities ½ SM; increase all MDA 80 feet and LNAV visibility Cats C and D ½ SM, Circling Cats C and D ¼ SM.

MISSED APPROACH: Climb to 3000 direct SOXOE and hold.

ASOS 124.175	KANSAS CITY APP CON 118.4 307.35	CLNC DEL 118.45	UNICOM 122.8 (CTAF) 0
------------------------	--	---------------------------	--



ELEV 1004

TDZE 997

REIL Rwy 11, 18, 29 and 36

MRL Rwy 11-29 and 18-36

4 NM Holding Pattern

WOMPO

JAPES

JOBAD 2.3 NM to RW36

RW36

3000

181°

001°

001°

2600

1760

1.6 NM to RW36

0.7

1.6 NM

3000 SOXOE

* LNAV only

GP 3.00°

TCH 45

6.8 NM

2.6 NM

0.7

1.6 NM

CATEGORY	A	B	C	D
LPV DA		1306-7/8	309 (400-7/8)	
LNAV/VNAV DA		1299-7/8	302 (300-7/8)	
LNAV MDA	1540-1	543 (600-1)	1540-1 5/8	543 (600-1 1/8)
CIRCLING	1540-1	536 (600-1)	1780-2 1/4	1780-2 1/2
			776 (800-2 1/4)	776 (800-2 1/2)

81

5501 X 100

4000 X 75

1107

36

001° to RW36

NC-3, 31 DEC 2020 to 28 JAN 2021

NC-3, 31 DEC 2020 to 28 JAN 2021