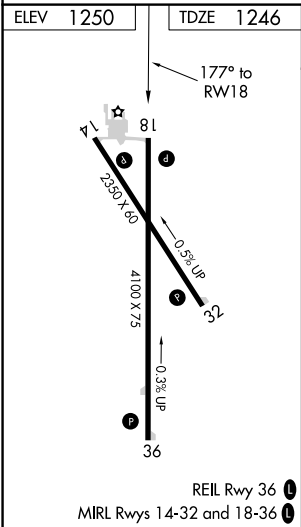
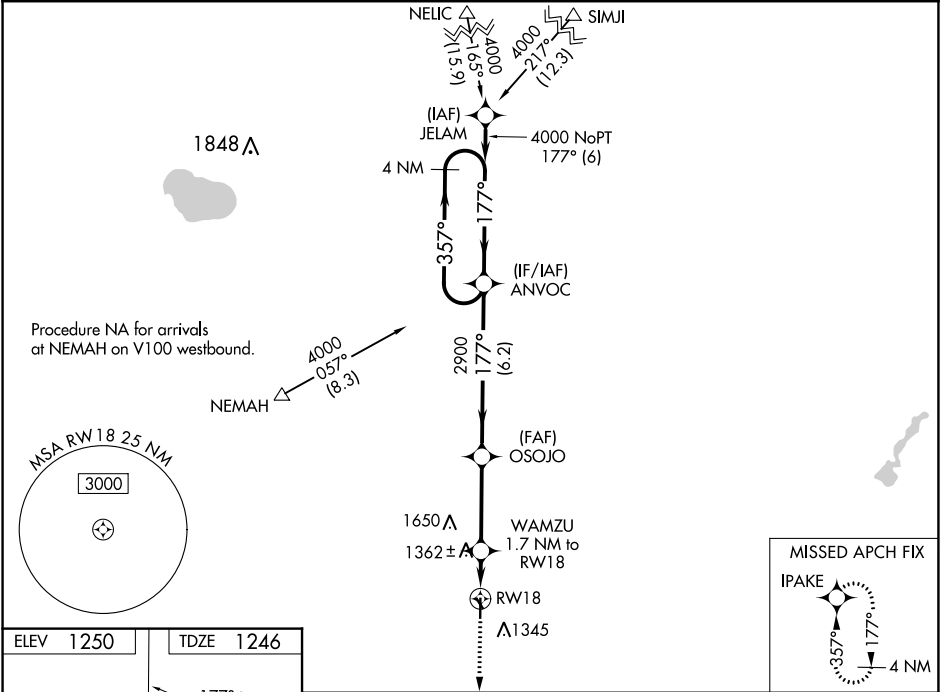


WAAS CH 49128 W18A	APP CRS 177°	Rwy Idg TDZE 1246 Apt Elev 1250
--	------------------------	---

RNAV (GPS) RWY 18
SAC CITY MUNI (SKI)

<p>⚠ NA</p> <p>Night landing: Rwy 14 NA. Baro-VNAV NA. DME/DME RNP-0.3 NA. Helicopter visibility reduction below ¼ SM NA. Use Carroll altimeter setting; when not received, use Denison altimeter setting and increase all DA 15 feet and all MDA 20 feet. Increase LPV and LNAV/VNAV visibility ½ mile all Cats.</p>	<p>MISSED APPROACH: Climb to 4000 direct IPAKE and hold.</p>
--	--

CIN AWOS-3 118.025	MINNEAPOLIS CENTER 134.0 288.3	UNICOM 122.8 (CTAF) 0
------------------------------	--	---------------------------------



4000 IPAKE	VGSI and RNAV glidepath not coincident (VGSI Angle 3.00/TCH 28).			
*LNAV only	WAMZU 1.7 NM to RW18	OSOJO 2900	ANVOC 4 NM Holding Pattern	4000
GP 3.00° TCH 40				
1.7 NM 3.4 NM 6.2 NM				
CATEGORY	A	B	C	D
LPV DA	1553-1	307 (400-1)	NA	
LNAV/VNAV DA	1553-1	307 (400-1)	NA	
LNAV MDA	1680-1	434 (500-1)	NA	
CIRCLING	1740-1	490 (500-1)	NA	

NC-3, 31 DEC 2020 to 28 JAN 2021

NC-3, 31 DEC 2020 to 28 JAN 2021