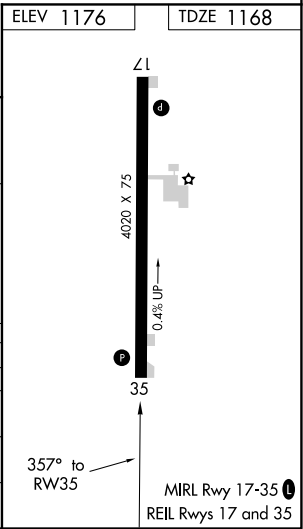
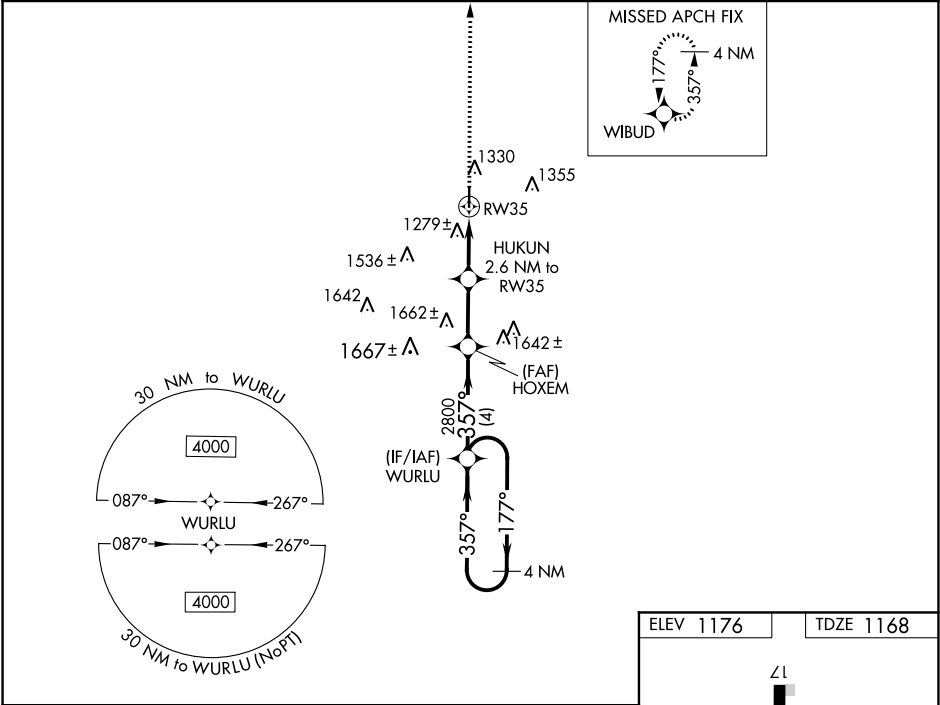


WAAS CH 77833 W35A	APP CRS 357°	Rwy Idg 4020 TDZE 1168 Apt Elev 1176
--	------------------------	---

RNAV (GPS) RWY 35
HAMPTON MUNI (HPT)

<p>▽ VDP and Baro-VNAV NA when using Mason City altimeter setting. For uncompensated Baro-VNAV systems, LNAV/VNAV NA below -17°C (2°F) or above 54°C (130°F). ▲ NA DME/DME RNP-0.3 NA. Helicopter visibility reduction below ¾ SM NA. When local altimeter setting not received, use Mason City altimeter setting and increase all DA 67 feet and all MDA 80 feet, and LNAV/VNAV all Cats visibility ¼ mile.</p>	<p>MISSED APPROACH: Climb to 4000 direct WIBUD and hold, continue climb-in-hold to 4000.</p>
--	---

AWOS-3 121.025	MINNEAPOLIS CENTER 134.0 288.3	UNICOM 122.7 (CTAF) 1
--------------------------	--	---------------------------------



NC-3, 31 DEC 2020 to 28 JAN 2021

NC-3, 31 DEC 2020 to 28 JAN 2021