

WAAS
CH **63138**
W13A

APP CRS
136°

Rwy ldg **3401**
TDZE **754**
Apt Elev **754**

RNAV (GPS) RWY 13

WASHINGTON MUNI (AWG)

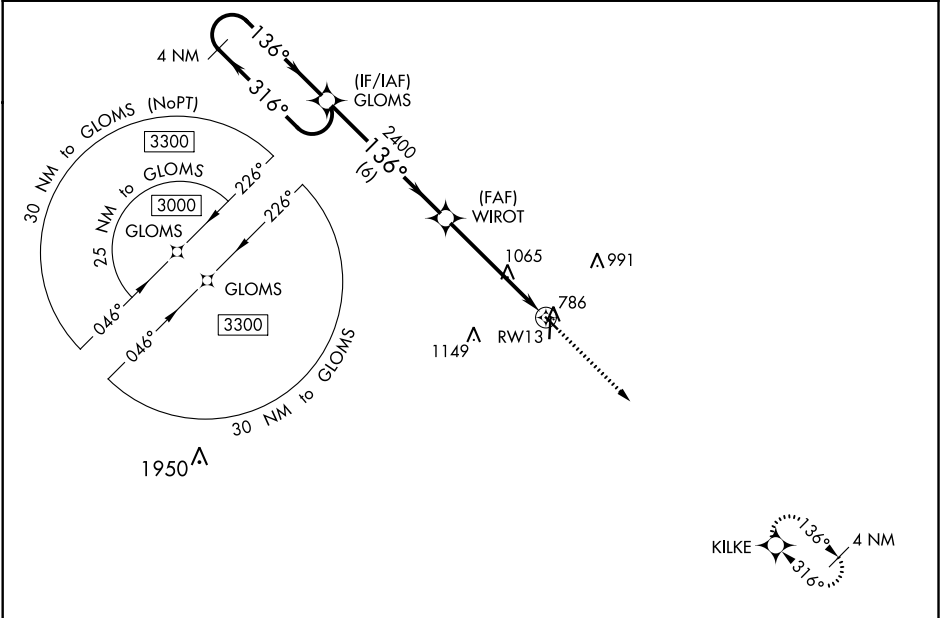
RNP APCH.
▼ For uncompensated Baro-VNAV systems, LNAV/VNAV NA below -6°C (22°F) or above 54°C (130°F).
▲ Baro-VNAV and VDP NA when using Iowa City altimeter setting. When local altimeter setting not received, use Iowa City altimeter setting: increase LPV DA to 1066 feet, LNAV/VNAV DA to 1282 feet; increase all MDAs 80 feet and visibility LNAV and Circling Cat C ¼ SM.

MISSED APPROACH:
Climb to 3000 direct KILKE and hold.

AWOS-3
127.825

CHICAGO CENTER
135.6 370.95

UNICOM
122.7 (CTAF) 0



4 NM Holding Pattern

GLOMS

3000

316°

136°

GP 3.00° TCH 37

WIROT 2400

3000 KILKE

*LNAV only

*1.7 NM to RW13

RW13

6 NM

3.4 NM

1.7 NM

CATEGORY	A	B	C	D
LPV DA	1004-1	250 (300-1)		NA
LNAV/VNAV DA	1220-1½	466 (500-1½)		NA
LNAV MDA	1320-1	566 (600-1)	1320-1½ 566 (600-1½)	NA
CIRCLING	1320-1	566 (600-1)	1500-2¼ 746 (800-2¼)	NA

ELEV 754

TDZE 754

136° to RW13

81

31

340° X 40

4000 X 75

36

MIRL Rwy 13-31 and 18-36

REIL Rwy 13, 31, 18 and 36