

WAAS CH 45816 W18A	APP CRS 184°	Rwy Idg 4000 TDZE 752 Apt Elev 754
--	------------------------	---

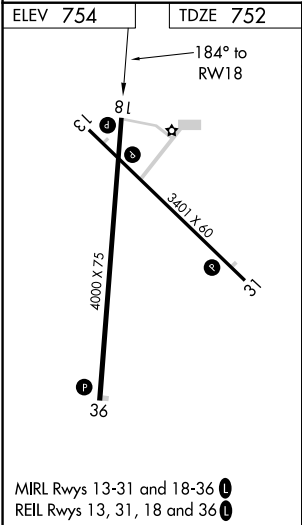
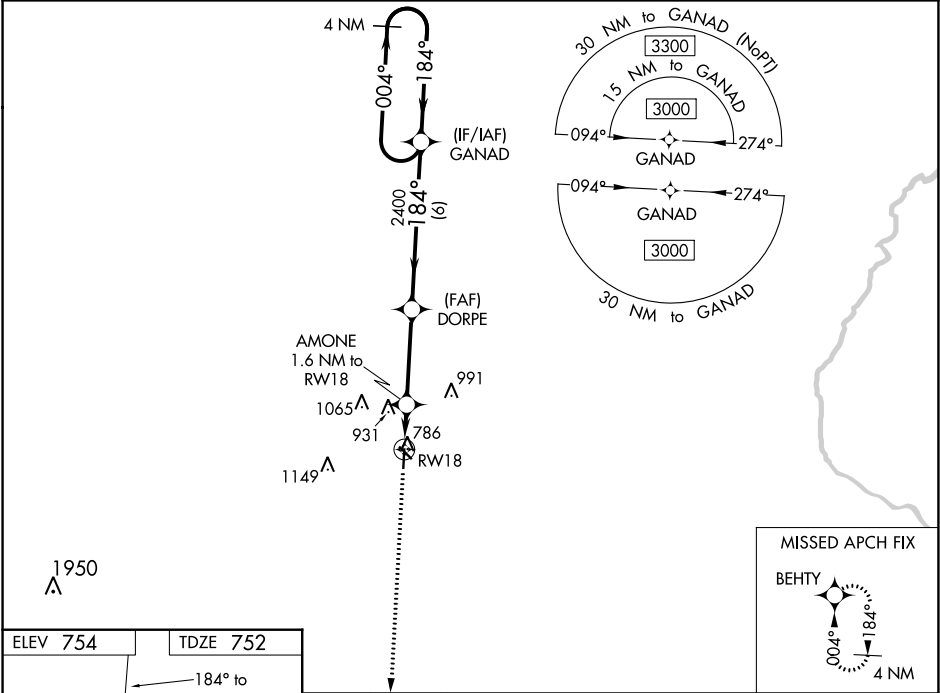
RNAV (GPS) RWY 18
WASHINGTON MUNI (A WG)

RNP APCH.

▼ For uncompensated Baro-VNAV systems, LNAV/VNAV NA below -6°C (22°F) or above 54°C (130°F).
▲ Baro-VNAV NA when using Iowa City altimeter setting. When local altimeter setting not received, use Iowa City altimeter setting: increase LPV DA to 1064 feet, LNAV/VNAV DA to 1116 feet; increase all MDAs 80 feet and visibility LNAV and Circling Cat C ¼ SM.

MISSED APPROACH:
Climb to 3000 direct
BEHTY and hold.

AWOS-3 127.825	CHICAGO CENTER 135.6 370.95	UNICOM 122.7 (CTAF) 0
--------------------------	---------------------------------------	---------------------------------



ELEV 754		TDZE 752	
3000 BEHTY		VGSI and RNAV glidepath not coincident (VGSI Angle 3.00/TCH 20).	
*LNAV only.		GANAD 4 NM Holding Pattern	
AMONE 1.6 NM to RW18		DORPE 2400	
RW18		004° → 3000	
1.6 NM		← 184°	
3.4 NM		2400	
6 NM		GP 3.00°	
*1300		TCH 45	
CATEGORY	A	B	C
LPV DA	1002-1	250 (300-1)	NA
LNAV/VNAV DA	1054-1	302 (300-1)	NA
LNAV MDA	1160-1	408 (500-1)	1160-1 1/8 408 (500-1 1/8)
CIRCLING	1200-1 446 (500-1)	1260-1 506 (600-1)	1500-2 1/4 746 (800-2 1/4)