

WAAS CH <b>90416</b> <b>W36A</b>	APP CRS <b>004°</b>	Rwy Idg <b>4000</b> TDZE <b>752</b> Apt Elev <b>754</b>
--	------------------------	---

RNAV (GPS) RWY 36

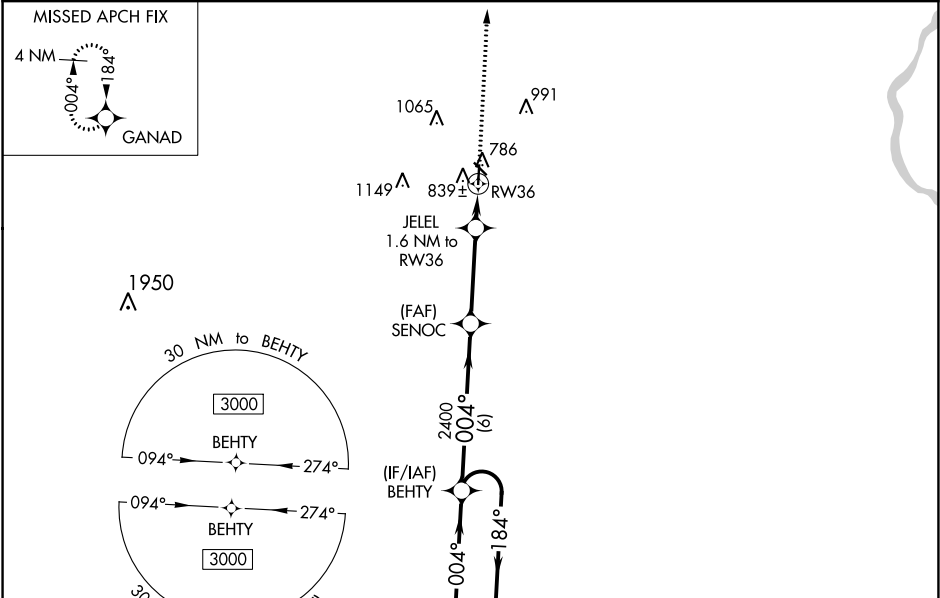
WASHINGTON MUNI (AWG)

RNP APCH.

▼ For uncompensated Baro-VNAV systems, LNAV/VNAV NA below -6°C (22°F) or above 54°C (130°F). Baro-VNAV and VDP NA when using Iowa City altimeter setting. When local altimeter setting not received, use Iowa City altimeter setting: increase LPV DA to 1064 feet and LNAV/VNAV DA to 1072 feet; increase all MDAs 80 feet and visibility LNAV and Circling Cat C ¼ SM.

▲ MISSED APPROACH: Climb to 3000 direct GANAD and hold.

AWOS-3 <b>127.825</b>	CHICAGO CENTER <b>135.6 370.95</b>	UNICOM <b>122.7 (CTAF) 0</b>
--------------------------	---------------------------------------	---------------------------------



ELEV <b>754</b>	TDZE <b>752</b>
-----------------	-----------------

MIRL Rwy 13-31 and 18-36 0  
REIL Rwy 18, 13, 31 and 36 0

4 NM Holding Pattern

3000 ← 184°  
004° →

GP 3.00°  
TCH 45

BEHTY

SENOC

JELE

RW36

3000

2400

2400

1300

6 NM

3.4 NM

0.6

1 NM

VGSI and RNAV glidepath not coincident (VGSI Angle 3.00/TCH 24).

\*LNAV only

\*1 NM to RW36

1.6 NM to RW36

1.6 NM to RW36

4000 X 75

3401 X 60

004° to RW36

CATEGORY	A	B	C	D
LPV DA	1002-1	250 (300-1)		NA
LNAV/VNAV DA	1010-1	258 (300-1)		NA
LNAV MDA	1100-1	348 (400-1)		NA
CIRCLING	1200-1 446 (500-1)	1260-1 506 (600-1)	1500-2¼ 746 (800-2¼)	NA