

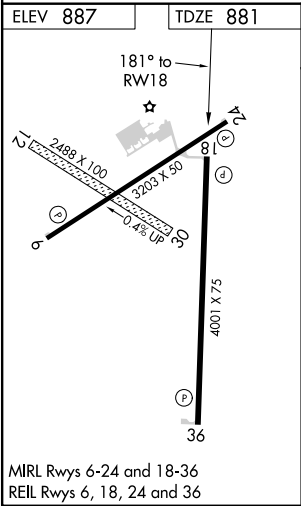
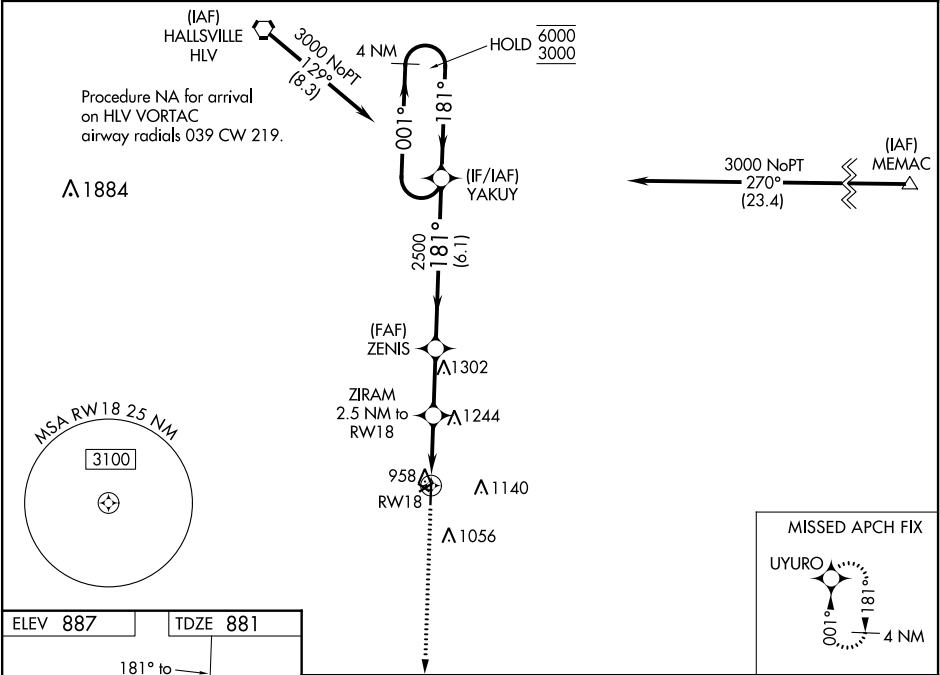
WAAS CH 42611 W18A	APP CRS 181°	Rwy Idg TDZE Apt Elev	4001 881 887
--	------------------------	-----------------------------	---

RNAV (GPS) RWY 18

ELTON HENSLEY MEMORIAL (F'TT)

RNP APCH.	<p>⚠ NA</p> <p>Circling NA to Rwy 12 and 30. Circling Rwy 24 NA at night. Rwy 18 helicopter visibility reduction below 1 SM NA. Baro-VNAV NA. Use Columbia altimeter setting; when not received use Jefferson City altimeter setting and increase all DA 62 feet, all MDA 80 feet, increase LPV and LNAV/VNAV all Cats visibility ¼ mile, LNAV and Circling Cat C visibility ¼ mile.</p>	MISSED APPROACH: Climb to 3000 direct UYURO and hold.
-----------	--	---

COU ASOS 128.45	MIZZU APP CON 124.375 353.7	UNICOM 122.7 (CTAF)
---------------------------	---------------------------------------	-------------------------------



3000	UYURO	ZENIS	YAKUY	4 NM Holding Pattern
*LNAV only	ZIRAM 2.5 NM to RW18	2500	181°	001° 6000 3000
RW18	1720*	2500	181°	GP 3.00° TCH 42
2.5 NM	2.4 NM	6.1 NM		
CATEGORY	A	B	C	D
LPV DA	1155-1 274 (300-1)			NA
LNAV/VNAV DA	1313-1½ 432 (500-1½)			NA
LNAV MDA	1520-1 639 (700-1)	1520-1¾ 639 (700-1¾)		NA
CIRCLING	1520-1 633 (700-1)	1560-2 673 (700-2)		NA

NC-3, 31 DEC 2020 to 28 JAN 2021

NC-3, 31 DEC 2020 to 28 JAN 2021