

WAAS  
CH **45803**  
**W19A**

APP CRS  
**187°**

Rwy Idg **4206**  
TDZE **797**  
Apt Elev **798**

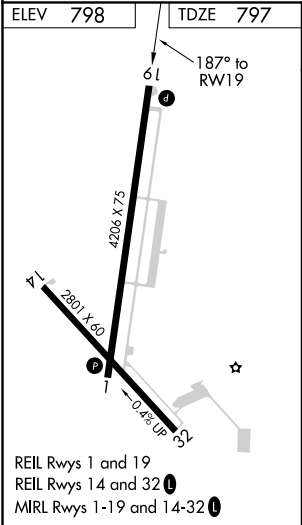
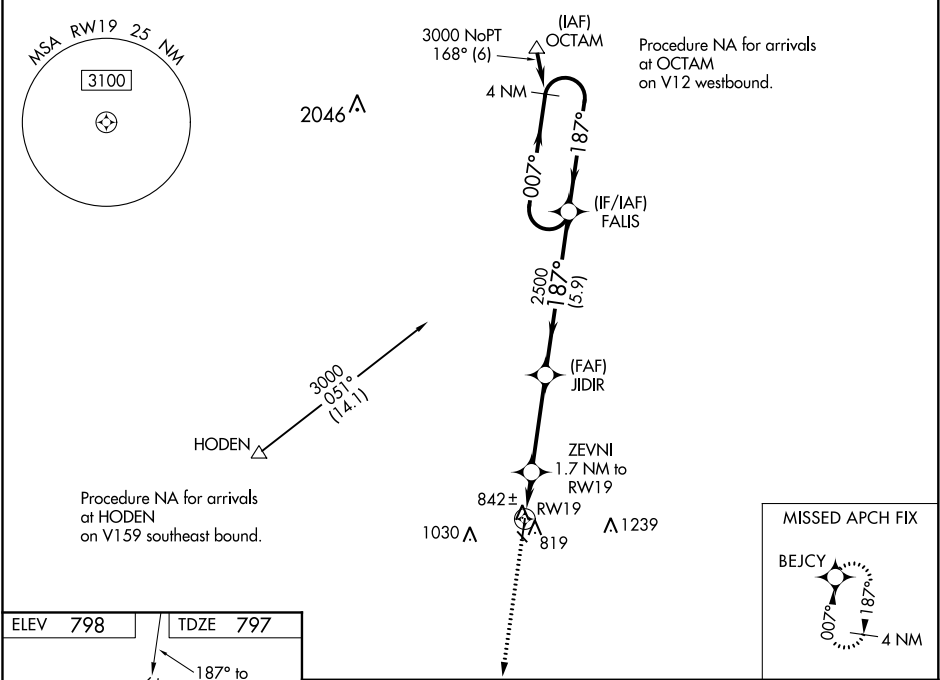
**RNAV (GPS) RWY 19**



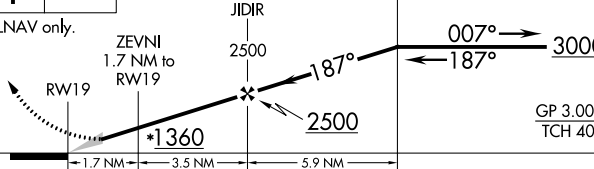

SKYHAVEN (RCM)

**⚠** Baro-VNAV NA when using Whiteman AFB altimeter setting. For uncompensated Baro-VNAV systems, LNAV/VNAV NA below -16°C (4°F) or above 54°C (130°F). DME/DME RNP-0.3 NA. When local altimeter setting not received, use Whiteman AFB altimeter setting and increase all DA 39 feet and all MDA 40 feet; increase LNAV/VNAV all Cats visibility 1⁄8 mile, and increase Cat C Circling visibility 1⁄4 mile.

**⚠** MISSED APPROACH: Climb to 3000 direct BEJCY and hold.

AWOS-3 <b>119.575</b>	WHITEMAN APP CON ★ <b>127.45 284.0</b>	UNICOM <b>123.0 (CTAF) 0</b>
--------------------------	---	---------------------------------



3000	BEJCY				FALIS	4 NM Holding Pattern
						
*LNAV only.						
						
CATEGORY	A	B	C	D		
LPV DA	1047-1 250 (300-1)		NA			
LNAV/ VNAV DA	1102-1 305 (400-1)		NA			
LNAV MDA	1240-1 443 (500-1)	1240-1 <sup>3</sup> / <sub>8</sub> 443 (500-1 <sup>3</sup> / <sub>8</sub> )		NA		
 CIRCLING	1260-1 462 (500-1)	1340-1 542 (600-1)	1380-1 <sup>1</sup> / <sub>2</sub> 582 (600-1 <sup>1</sup> / <sub>2</sub> )		NA	