

WAAS CH 78215 W13A	APP CRS 134°	Rwy Idg 4012 TDZE 837 Apt Elev 841
--	------------------------	---

RNAV (GPS) RWY 13

OSKALOOSA MUNI (00A)

RNP APCH.

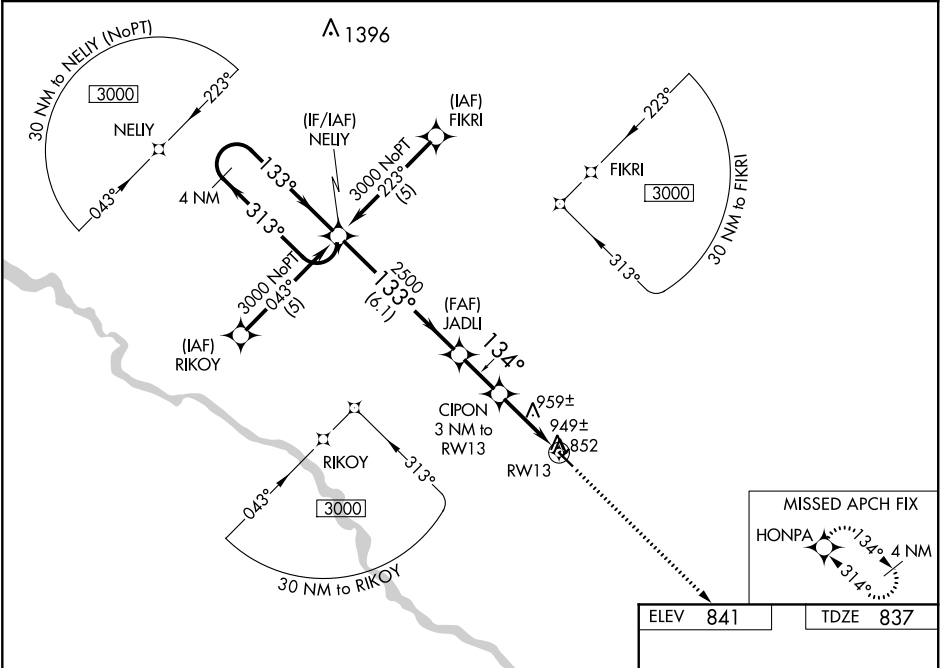
▼

▲

When local altimeter setting not received, use Ottumwa altimeter setting and increase all DA 18 feet and all MDA 20 feet and increase LNAV/VNAV all Cats visibility ¼ mile. Baro-VNAV and VDP NA when using Ottumwa altimeter setting. For uncompensated Baro-VNAV systems, LNAV/VNAV NA below -1.6°C (4°F) or above 54°C (130°F).

MISSED APPROACH: Climb to 3000 direct HONPA and hold.

AWOS-3 118.625	CHICAGO CENTER 118.15 335.575	UNICOM 122.8 (CTAF) 0
--------------------------	---	---------------------------------



4 NM Holding Pattern

VGSI and RNAV glidepath not coincident (VGSI Angle 3.00/TCH 22).

3000 HONPA

GP 3.00° TCH 40

3000 ← 313° 133° → 133° 134° 2500

CIPON 3 NM to RW13

* LNAV only

* 1.1 NM to RW13

* 1820

6.1 NM 2 NM 1.9 1.1

CATEGORY	A	B	C	D
LPV DA	1193-1¼	356 (400-1¼)		NA
LNAV/VNAV DA	1219-1¼	382 (400-1¼)		NA
LNAV MDA	1220-1	383 (400-1)		NA
CIRCLING	1260-1 419 (500-1)	1300-1 459 (500-1)	1300-1½ 459 (500-1½)	NA

