

WAAS CH 73022 W32A	APP CRS 323°	Rwy Idg 4600 TDZE 1145 Apt Elev 1145
--	------------------------	---

RNAV (GPS) RWY 32

NORTHWEST MISSOURI RGNL (EVU)

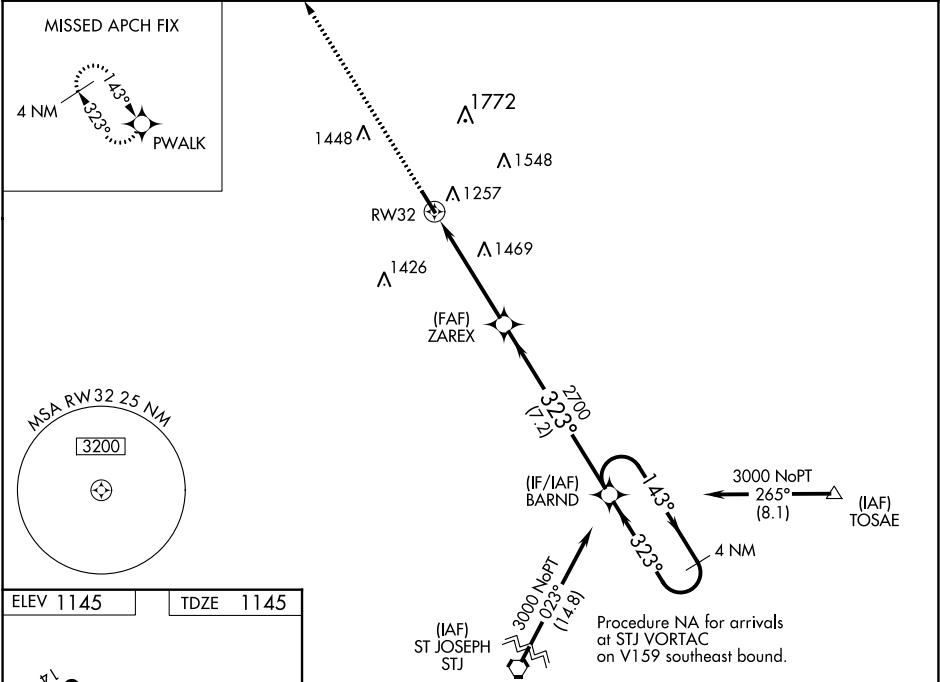
▼

RNA

Baro-VNAV NA when using St Joseph altimeter setting. For uncompensated Baro-VNAV systems, LNAV/VNAV NA below -17°C (2°F) or above 54°C (130°F). DME/DME RNP-0.3 NA. Helicopter visibility reduction below ¾ SM NA. When local altimeter setting not received, use St Joseph altimeter setting: increase LPV and LNAV/VNAV DA to 1520 feet and all Cats visibility ¾ mile; increase all MDA 140 feet, LNAV Cat C visibility ¾ mile and Circling Cat C visibility ¼ mile. VDP NA when using St Joseph altimeter setting. Circling NA east of Rwy 14-32.

MISSED APPROACH:
Climb to 3000 direct
PWALK and hold.

AWOS-3PT 118.225	MINNEAPOLIS CENTER 119.6 290.4	UNICOM 122.8 (CTAF) 1
----------------------------	--	---------------------------------



3000		PWALK		VGSI and RNAV glidepath not coincident (VGSI Angle 3.00/TCH 34).		4 NM	
*LNAV only.		ZAREX		2700		Holding Pattern	
RW32		1.4 NM to RW32		323°		3000	
1.4 NM		3.4 NM		7.2 NM		GP 3.00° TCH 40	
CATEGORY		A	B	C	D		
LPV DA		1395-7/8	250 (300-7/8)			NA	
LNAV/VNAV DA		1395-7/8	250 (300-7/8)			NA	
LNAV MDA		1620-1	475 (500-1)	1620-1 3/8 475 (500-1 3/8)		NA	
CIRCLING		1620-1	475 (500-1)	1620-1 1/2 475 (500-1 1/2)		NA	