

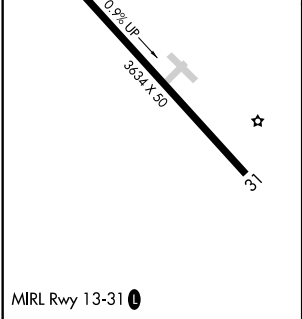
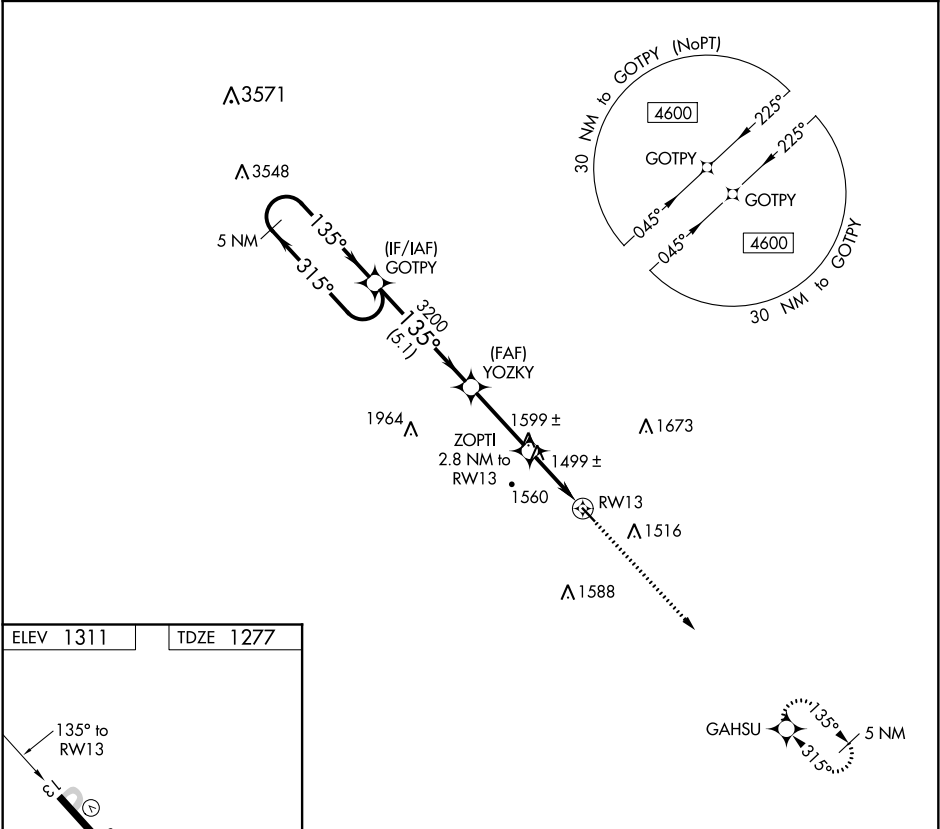
APP CRS	Rwy Idg	3634
135°	TDZE	1277
	Apt Elev	1311

RNAV (GPS) RWY 13

AVA BILL MARTIN MEMORIAL (AOV)

RNP APCH.	Procedure NA at night. Use Branson altimeter setting, if not received use Springfield Branson Natl altimeter setting and increase all MDA 20 feet. Rwy 13 helicopter visibility reduction below 1 SM NA.	MISSED APPROACH: Climb to 3500 direct GAHSU and hold.
▼ ▲ NA		

BBG AWOS-3 124.625	SPRINGFIELD APP CON 126.35	UNICOM 122.7 (CTAF) 0
-----------------------	-------------------------------	--------------------------



5 NM Holding Pattern				3500	GAHSU
VGSI and RNAV glidepath not coincident (VGSI Angle 3.00/TCH 34).					
4600 ← 315° → 135° → 135° → 3200					
5.1 NM				3.00° TCH 40	
				2200	
				2.8 NM to RW13	
CATEGORY	A	B	C	D	
LNAV MDA	1840-1	563 (600-1)		NA	

NC-3, 31 DEC 2020 to 28 JAN 2021

NC-3, 31 DEC 2020 to 28 JAN 2021