

WAAS CH 40044 W34A	APP CRS 347°	Rwy Idg TDZE Apt Elev	2797 1363 1363
--	------------------------	-----------------------------	---

RNAV (GPS) RWY 34

ROCK RAPIDS MUNI (RRQ)

RNP APCH.	Procedure NA at night. Rwy 34 helicopter visibility reduction below 1 SM NA. Use Sioux Falls, SD altimeter setting.	MISSED APPROACH: Climb to 2200 then climbing left turn to 3700 direct BRAIN and hold.
-----------	---	---

SIOUX FALLS APP CON ★ 126.9 284.725	UNICOM 122.8 (CTAF) 0
---	---------------------------------

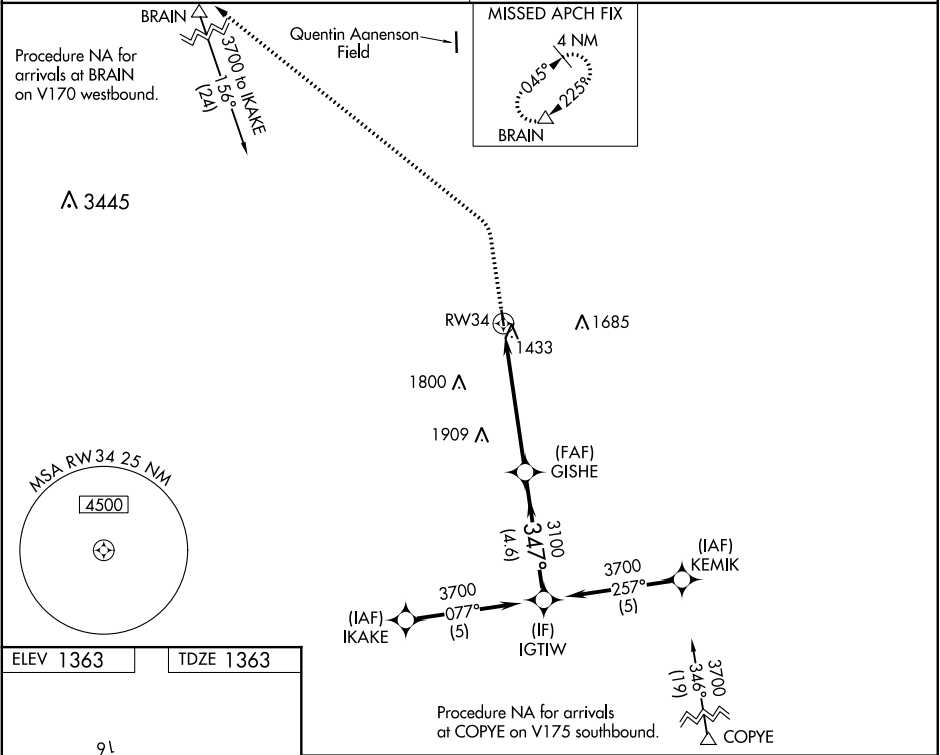


Diagram of RWY 34 showing a 3097 x 50 runway. A 347° bearing is indicated to RW34. A MIRL Rwy 16-34 is also shown.

2200	3700	BRAIN	
↑	↶	△	
		GISHE	IGTIW
		RW34	3700
		3100	347°
		5.4 NM	4.6 NM
		3.00°	TCH 30

CATEGORY	A	B	C	D
LP MDA	1960-1	597 (600-1)	NA	
LNAV MDA	1960-1	597 (600-1)	NA	
CIRCLING	1960-1	2040-1	NA	
	597 (600-1)	677 (700-1)		