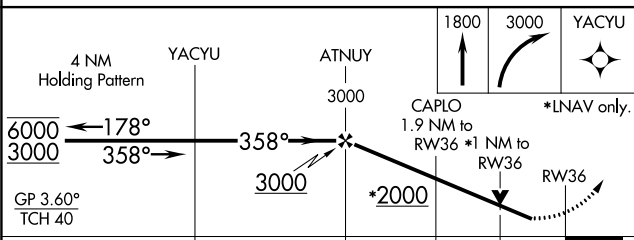
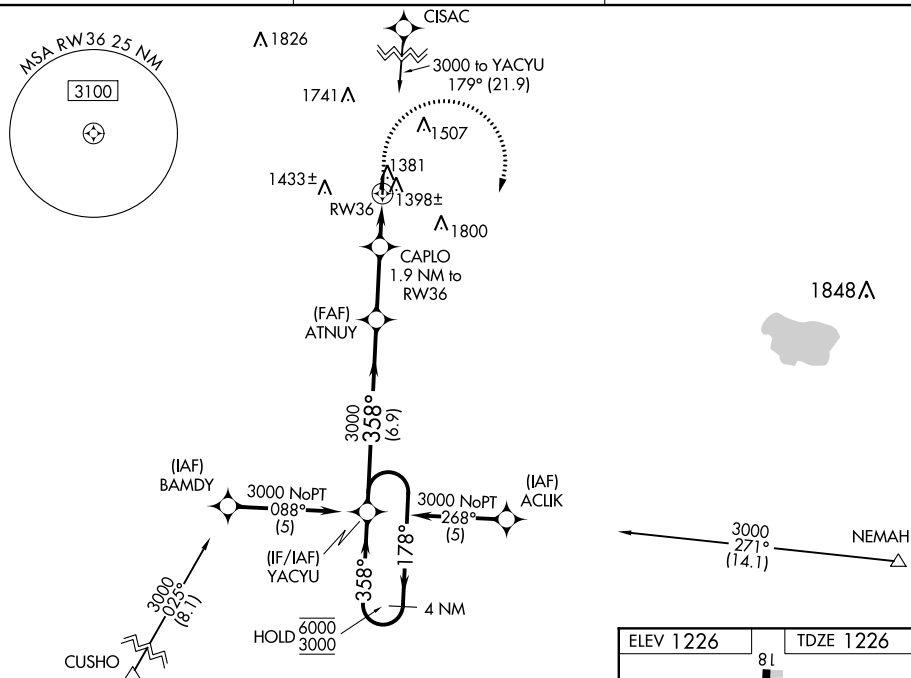




19059

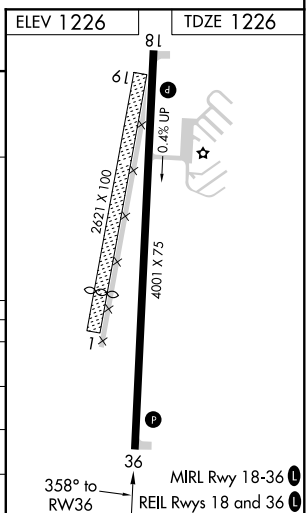
RNAV (GPS) RWY 36  
CHEROKEE COUNTY RGNL (CKP)

**T** Rwy 36 helicopter visibility reduction below  $\frac{3}{4}$  SM NA.  
Circling to Rwy 1-19 NA. Circling Rwy 18 NA at night.

**MISSED APPROACH:** Climb to 1800 then climbing right turn to 3000 direct YACYU and hold.

UNICOM  
122.8 (CTAF) 

CATEGORY		A	B	C	D
LPV	DA	1492-1	266 (300-1)	NA	
LNAV/ VNAV	DA	1540-1	314 (400-1)	NA	
LNAV	MDA	1660-1	434 (500-1)	NA	
 CIRCLING		1760-1 534 (600-1)	1820-1 594 (600-1)	NA	



CHEROKEE COUNTY RGNL (CKP)  
RNAV (GPS) RWY 36

NC-3, 31 DEC 2020 to 28 JAN 2021