

WAAS CH 62917 W27A	APP CRS 272°	Rwy Idg TDZE 839 Apt Elev 842	4000 839 842
--	------------------------	---	---

RNAV (GPS) RWY 27

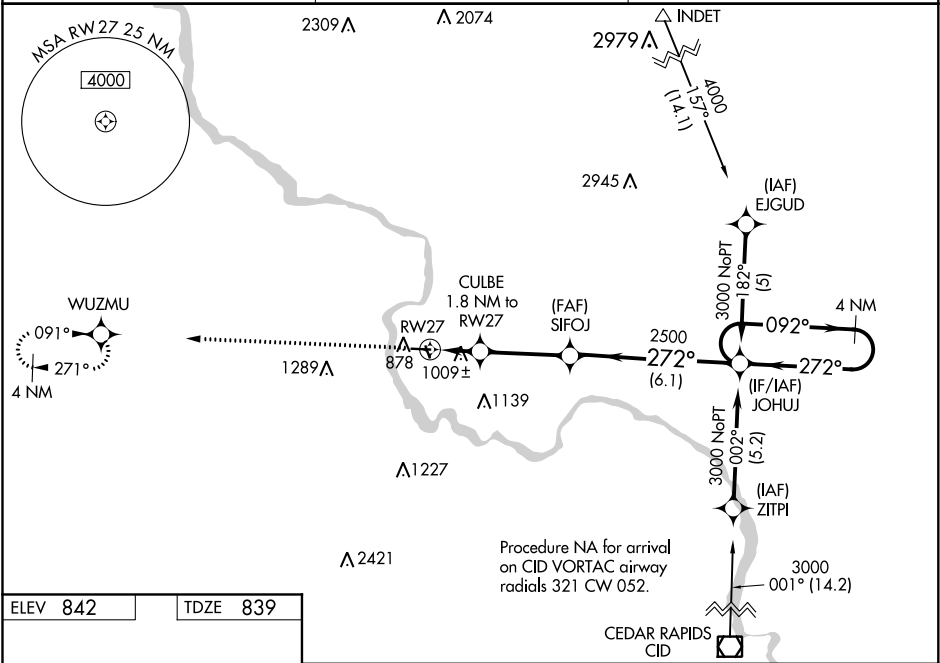
VINTON VETERANS MEMORIAL AIRPARK (VTI)

⚠

When VGSI inoperative, Circling Rwy 9 NA at night. For uncompensated Baro-VNAV systems, LNAV/VNAV NA below -16°C (4°F) or above 54°C (130°F). DME/DME RNP-0.3 NA. Visibility reduction by helicopters NA. When local altimeter setting not received, use Independence altimeter setting and increase all DA 54 feet and all MDA 60 feet, and increase LNAV/VNAV all Cats visibility ¼ mile. Baro-VNAV and VDP NA when using Independence altimeter setting.

MISSED APPROACH: Climb to 3000 direct WUZMU and hold.

AWOS-3 120.075	CEDAR RAPIDS APP CON ★ 134.05 266.8	UNICOM 122.8 (CTAF) ①
--------------------------	---	---------------------------------



ELEV 842	TDZE 839
-----------------	-----------------

↑

WUZMU

↑

CULBE

↑

SIFOJ

↑

JOHUU

*LNAV only

1.2 NM

0.6

3.2 NM

6.1 NM

1.2 NM

0.6

3.2 NM

6.1 NM

3000

2500

272°

092°

3000

GP 3.00°

TCH 40

CATEGORY	A	B	C	D
LPV DA	1089-1	250 (300-1)	NA	NA
LNAV/VNAV DA	1323-1¾	484 (500-1¾)	NA	NA
LNAV MDA	1260-1	421 (500-1)	NA	NA
CIRCLING	1320-1	478 (500-1)	NA	NA

REIL Rwy 9 and 27 ①
MIRL Rwy 9-27 ①