

LAMAR, MISSOURI

AL-6725 (FAA)

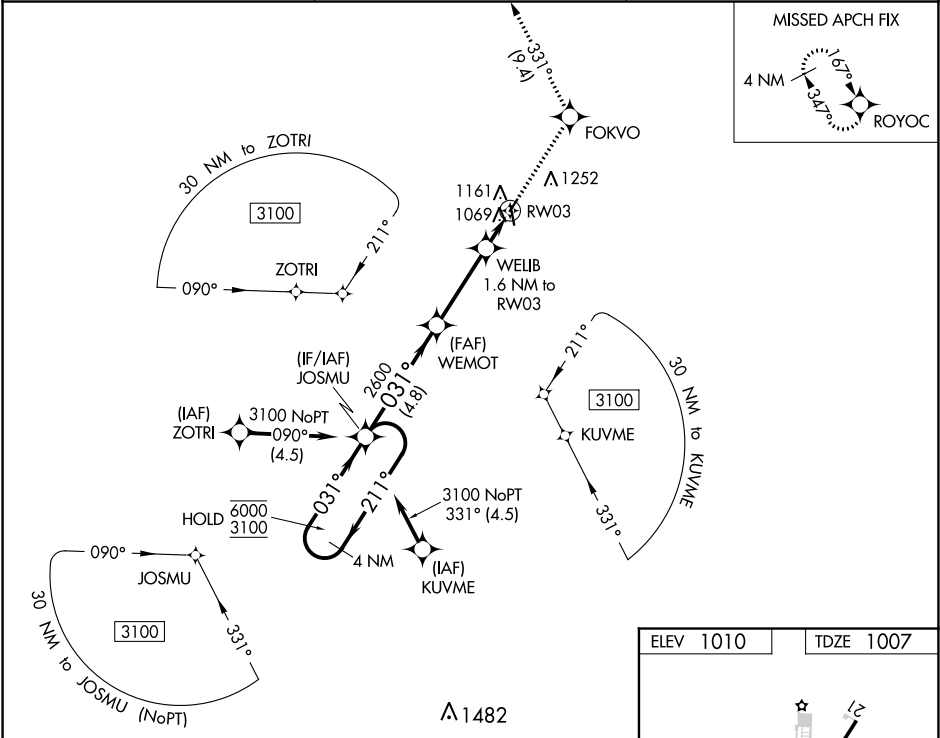
19339

WAAS CH <b>45536</b> <b>W03A</b>	APP CRS <b>031°</b>	Rwy Idg TDZE Apt Elev	<b>2900</b> <b>1007</b> <b>1010</b>
--	------------------------	-----------------------------	---

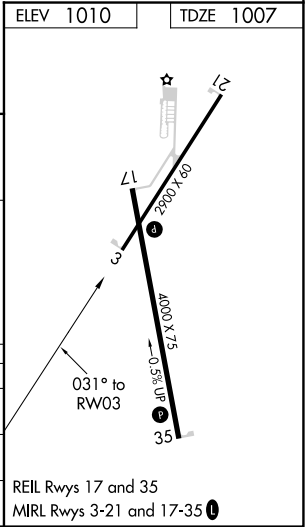
**RNAV (GPS) RWY 3**  
LAMAR MUNI (LLU)

RNP APCH.	MISSED APPROACH: Climb to 3100 direct FOKVO and on track 331° to ROYOC and hold.
Circling Rwy 21 NA at night. Use Joplin altimeter setting. Rwy 3 helicopter visibility reduction below 3/4 SM NA.	

JLN ASOS <b>120.85</b>	KANSAS CITY CENTER <b>128.6 282.325</b>	CTAF <b>122.9</b>
---------------------------	--	----------------------



4 NM Holding Pattern		JOSMU	WEMOT	3100 ↑	FOKVO ✧	tr 331°	ROYOC ✧
6000 3100	←211° 031°→	031°	2600	3.00° TCH 40	WELIB 1.6 NM to RW03	1540	RW03 ↗
		4.8 NM	3.3 NM	1.6 NM			
CATEGORY	A	B	C	D			
LP MDA	1380-1	373 (400-1)	NA				
LNAV MDA	1480-1	473 (500-1)	NA				
CIRCLING	1520-1 510 (600-1)	1620-1 610 (700-1)	NA				



LAMAR, MISSOURI  
Amdt 1B 05DEC19

37°29'N-94°19'W

LAMAR MUNI (LLU)  
**RNAV (GPS) RWY 3**

NC-3, 31 DEC 2020 to 28 JAN 2021

NC-3, 31 DEC 2020 to 28 JAN 2021