

APP CRS	Rwy Idg	3381
133°	TDZE	1132
	Apt Elev	1132

RNAV (GPS) RWY 13

EAGLE GROVE MUNI (EAG)

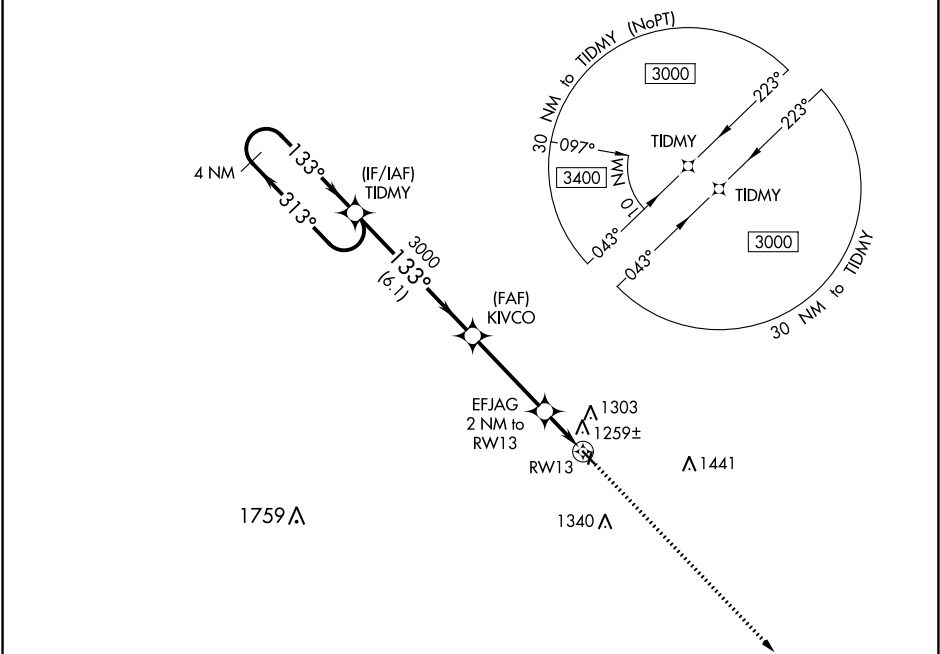
▼

NA

DME/DME RNP-0.3 NA. Use Clarion altimeter setting, when not received, use Fort Dodge altimeter setting and increase all MDA 20 feet. Helicopter visibility reduction below 1 SM NA. Night Landing: Rwy 13 NA. Circling NA to Rwy's 1 and 19.

MISSED APPROACH: Climb to 3000 direct SAYQU and hold.

CAV AWOS-3 126.575	MINNEAPOLIS CENTER 134.0 288.3	UNICOM 122.8 (CTAF) 0
-----------------------	-----------------------------------	--------------------------



MISSED APCH FIX

SAYQU

133°
314°

4 NM

ELEV 1132

TDZE 1132

4 NM Holding Pattern

TIDMY

KIVCO

3000

313°

133°

3000

3.00°

TCH 40

EFJAG 2 NM to RW13

1800

RW13

6.1 NM

3.7 NM

2 NM

3000

SAYQU

133° to RW13

314°

2389 X 120

3000 X 60

1

31

CATEGORY	A	B	C	D
LNAV MDA	1540-1	408 (500-1)	NA	
CIRCLING	1660-1	528 (600-1)	NA	

MIRL Rwy 13-31 0
REIL Rwy's 13 and 31 0