

APP CRS	Rwy Idg	2949
332°	TDZE	1279
	Apt Elev	1279

GPS RWY 33

ELLEN CHURCH FIELD (CJJ)

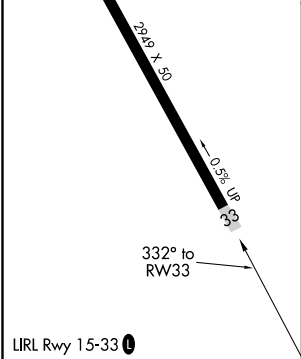
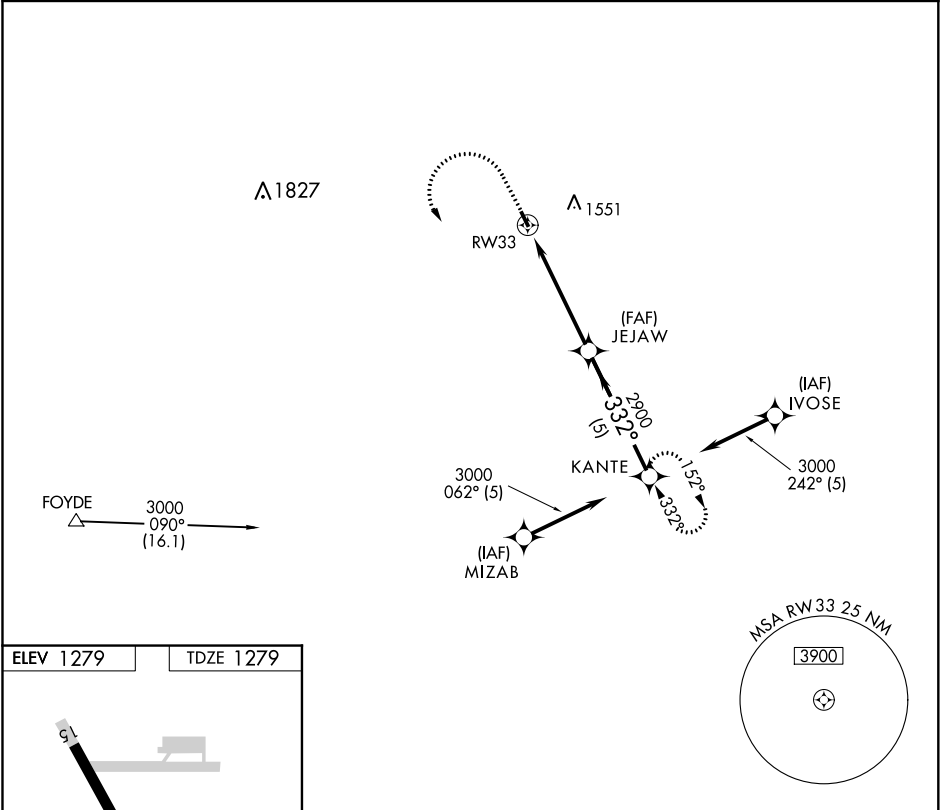
▼

▲ NA

Use Decorah Muni altimeter setting. Procedure NA at night.
Rwy 33 helicopter visibility reduction below 1 SM NA.

MISSED APPROACH: Climb to 2400 then climbing left turn to 3000 direct KANTE and hold.

DEH AWOS-3 120.925	MINNEAPOLIS CENTER 118.85	UNICOM 122.8 (CTAF) 0
-----------------------	------------------------------	--------------------------



	2400	3000	KANTE	
	↑	↶	✧	
			JEJAW	KANTE
			2900	3000
			332°	Procedure Turn NA
			3.01° TCH 40	
			5 NM	5 NM
CATEGORY	A	B	C	D
S-33	1740-1	461 (500-1)	1740-1 3/8 461 (500-1 3/8)	NA
CIRCLING	1860-1	581 (600-1)	1860-1 1/2 581 (600-1 1/2)	NA

NC-3, 31 DEC 2020 to 28 JAN 2021

NC-3, 31 DEC 2020 to 28 JAN 2021