

WAAS  
CH **50219**  
W**15A**

APP CRS  
**155°**

Rwy Idg **4000**  
TDZE **1062**  
Apt Elev **1062**

**RNAV (GPS) RWY 15**

CAMDENTON MEMORIAL-LAKE RGNL (OZS)

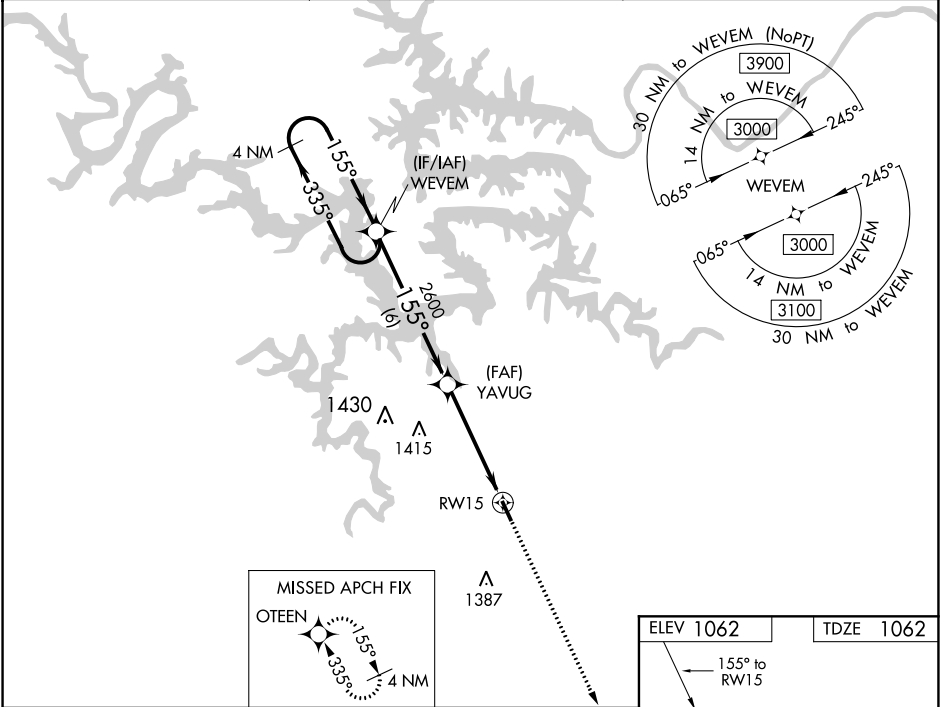
▼

▲

For uncompensated Baro-VNAV systems, LNAV/VNAV NA below -17°C (2°F) or above 54°C (130°F). DME/DME RNP-0.3 NA. Helicopter visibility reduction below ¾ SM NA. When local altimeter setting not received, use Lee C Fine Memorial altimeter setting and increase all DA 50 feet, all MDA 60 feet, and increase LPV and LNAV/VNAV all Cals visibility ½ mile. Baro-VNAV and VDP NA when using Lee C Fine Memorial altimeter setting.

MISSED APPROACH:  
Climb to 3000 direct OTEEN and hold.

AWOS-3 <b>120.225</b>	MIZZU APP CON <b>124.1 353.7</b>	UNICOM <b>122.8 (CTAF) 0</b>
--------------------------	-------------------------------------	---------------------------------



4 NM Holding Pattern

WEVEM

3000 ← 335°  
155° →

GP 3.00°  
TCH 41

YAVUG 2600

2600

6 NM

3.7 NM

1 NM

3000

OTEEN

\*LNAV only.

\*1 NM to RW15

RW15

CATEGORY	A	B	C	D
LPV DA	1312-7/8	250 (300-7/8)	NA	
LNAV/VNAV DA	1468-13/8	406 (500-13/8)	NA	
LNAV MDA	1420-1	358 (400-1)	NA	
CIRCLING	1540-1	478 (500-1)	NA	

