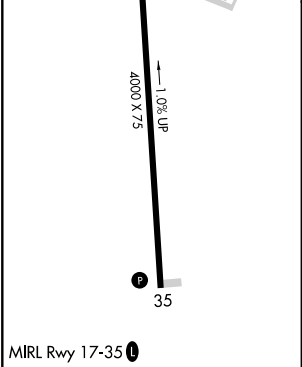
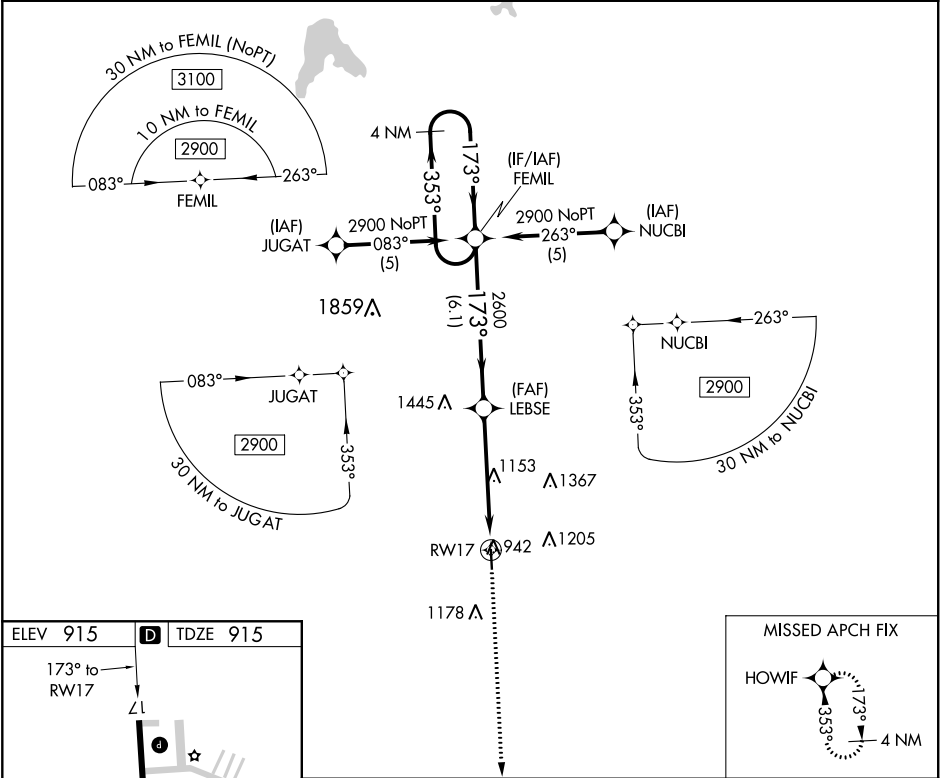


APP CRS	Rwy Idg	4000
173°	TDZE	915
	Apt Elev	915

RNAV (GPS) RWY 17  
LAWRENCE SMITH MEMORIAL (L.R.Y)

RNP APCH.	When local altimeter setting not received, use Charles B Wheeler Downtown altimeter setting: increase all MDAs 100 feet and visibility Cat C ¼ mile. Procedure NA at night. Rwy 17 helicopter visibility reduction below 1 SM NA.	MISSED APPROACH: Climb to 2600 direct HOWIF and hold.
-----------	--	---

AWOS-3PT 119.975	KANSAS CITY CENTER 125.55 327.0	UNICOM 123.0 (CTAF) 0
---------------------	------------------------------------	--------------------------



VGSi and descent angles not coincident (VGSi Angle 4.00/TCH 53).				2600	HOWIF
4 NM Holding Pattern				↑	✧
2900 ← 353° 173° →				2600	
LEBSE				3.04° TCH 40	
RWY 17				6.1 NM	5.1 NM
CATEGORY	A	B	C	D	
LNAV MDA	1420-1	505 (600-1)	1420-1½ 505 (600-1½)	NA	
CIRCLING	1420-1 505 (600-1)	1460-1 545 (600-1)	1460-1½ 545 (600-1½)	NA	

NC-3, 31 DEC 2020 to 28 JAN 2021

NC-3, 31 DEC 2020 to 28 JAN 2021