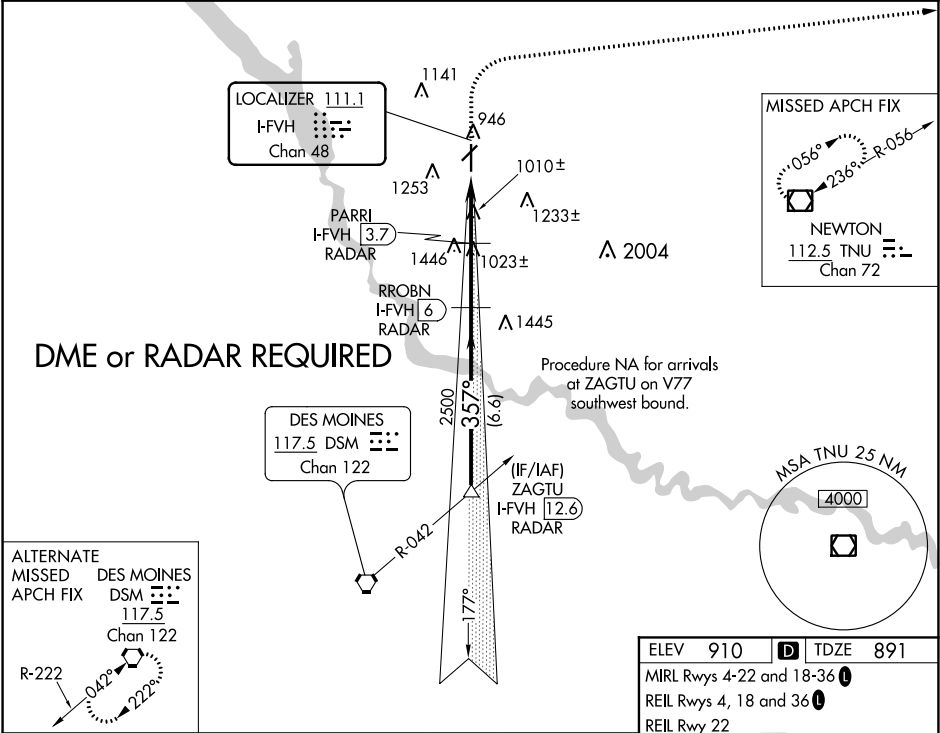


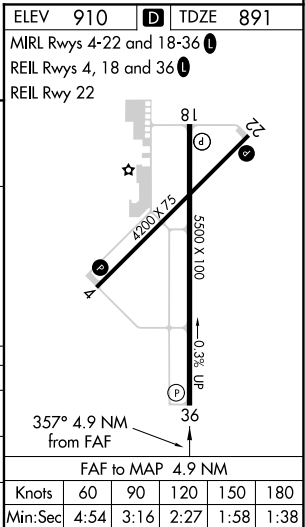
LOC/DME I-FVH	APP CRS	Rwy Idg	5500
111.1	357°	TDZE	891
Chan 48		Apt Elev	910

ILS or LOC RWY 36  
ANKENY RGNL (IKV)

<p><b>NA</b></p> <p>Circling Rwy 22 NA at night. DME or RADAR required.</p>		<p>MISSED APPROACH: Climb to 2000 then climbing right turn to 4000 direct TNU VOR/DME and hold.</p>	
AWOS-3 119.175	DES MOINES APP CON 123.9 307.15	CLNC DEL 126.65	(CTAF) 122.90



<p>GS 3.00° TCH 52</p> <p>3000 357° 2500 1760</p> <p>6.6 NM 2.3 NM 1.6 NM 1 NM</p>				
CATEGORY	A	B	C	D
S-ILS 36	1091-3/4		200 (200-3/4)	
S-LOC 36	1260-1		369 (400-1)	
CIRCLING	1560-1	650 (700-1)	1560-1 3/4 650 (700-1 3/4)	1760-2 3/4 850 (900-2 3/4)



NC-3, 31 DEC 2020 to 28 JAN 2021

NC-3, 31 DEC 2020 to 28 JAN 2021