

APP CRS	Rwy Idg	4200
222°	TDZE	902
	Apt Elev	910

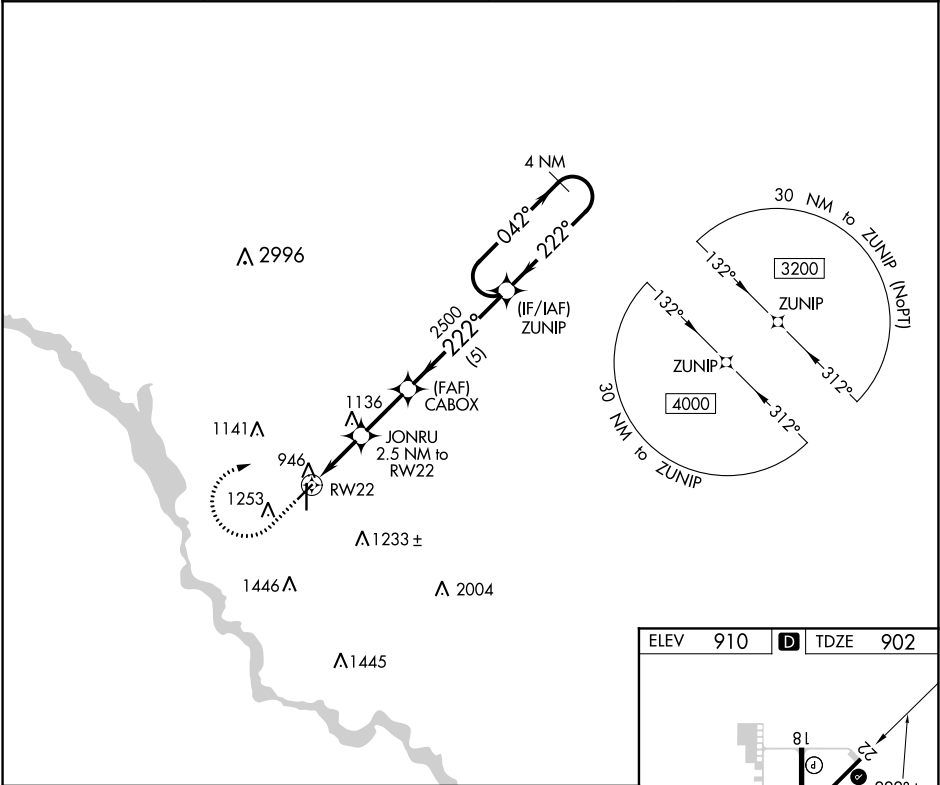
RNAV (GPS) RWY 22

ANKENY RGNL (IKV)

Rwy 22 helicopter visibility reduction below 1 SM NA.
DME/DME RNP-0.3 NA. Straight-in Rwy 22 NA at night.

MISSED APPROACH: (Do not exceed 240 KIAS until ZUNIP). Climb to 1500 then climbing right turn to 3200 direct ZUNIP and hold.

AWOS-3 119.175	DES MOINES APP CON 123.9 307.15	CLNC DEL 126.65	(CTAF) 122.9
-------------------	------------------------------------	--------------------	-----------------



1500
↑

3200
↗

ZUNIP
✦

VGSI and descent angles not coincident (VGSI Angle 3.00/TCH 32).

4 NM Holding Pattern

CABOX
≤ 3.00°
TCH 45

JONRU
2.5 NM to RW22

RW22

1740

2500

042° → 3200

← 222°

222°

2.5 NM

2.4 NM

5 NM

CATEGORY	A	B	C	D
LNAV MDA	1360-1	458 (500-1)	1360-1 ³ / ₈	458 (500-1 ³ / ₈)
CIRCLING	1560-1	650 (700-1)	1560-1 ³ / ₄ 650 (700-1 ³ / ₄)	1760-2 ³ / ₄ 850 (900-2 ³ / ₄)

ELEV 910 D TDZE 902

MIRL Rwy 4-22 and 18-36

REIL Rwy 4, 18 and 36

REIL Rwy 22

NC-3, 31 DEC 2020 to 28 JAN 2021

NC-3, 31 DEC 2020 to 28 JAN 2021