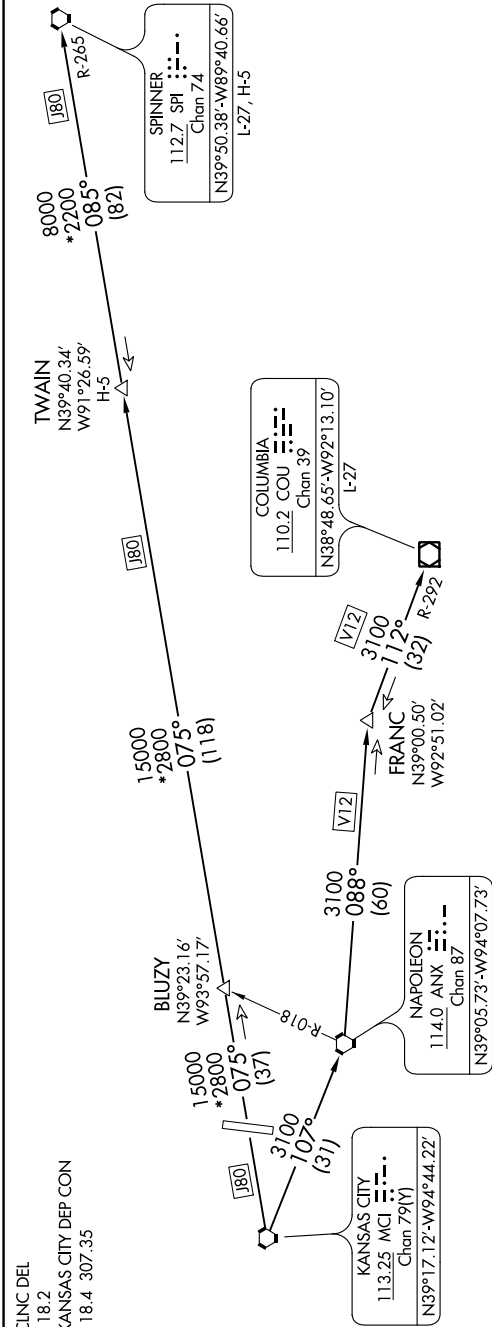


LAKE THREE DEPARTURE

AL-9229 (FAA)

MIDWEST NATIONAL AIR CENTER (GPH)
MOSBY, MISSOURI

NC-3, 31 DEC 2020 to 28 JAN 2021



NOTE: Chart not to scale.

DEPARTURE ROUTE DESCRIPTION

TAKEOFF ALL RUNWAYS: Climb on assigned heading for RADAR vectors to appropriate route. Expect filed altitude 10 minutes after departure.

COLUMBIA TRANSITION (LAKES3.COU): From over MCI VORTAC on MCI R-107 to ANX VORTAC, then on ANX R-088 and COU R-292 to COU VOR/DME.

FRANC TRANSITION (LAKES3.FRANC): From over MCI VORTAC on MCI R-107 to ANX VORTAC, then on ANX R-088 to FRANC FIX.

SPINNER TRANSITION (LAKES3.SPI): From over MCI VORTAC on MCI R-075 and SPI R-265 to TWAIN FIX, then on SPI R-265 to SPI VORTAC.

TWAIN TRANSITION (LAKES3.TWAIN): From over MCI VORTAC on MCI R-075 and SPI R-265 to TWAIN FIX.

NOTE: RADAR required.
NOTE: DME required.

TAKEOFF MINIMUMS
Rwys 18, 36: Standard.