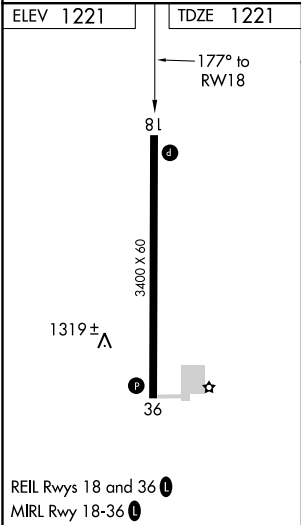
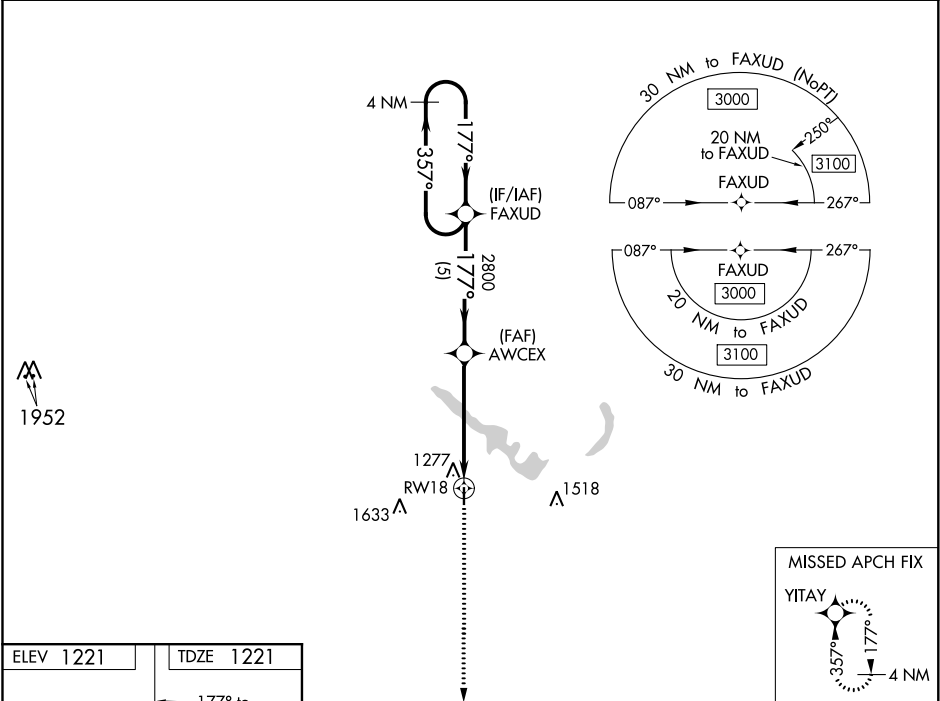


WAAS CH <b>69533</b> <b>W18A</b>	APP CRS <b>177°</b>	Rwy Idg TDZE <b>1221</b> Apt Elev <b>1221</b>
--	------------------------	---

**RNAV (GPS) RWY 18**  
GUTHRIE COUNTY RGNL (GCT)

<b>NA</b> Baro-VNAV NA. DME/DME RNP-0.3 NA. Use Audubon altimeter setting; when not received, use Carroll altimeter setting and increase LPV DA to 1535, LNAV/VNAV DA to 1748 and all MDA 20 feet; increase LNAV/VNAV all Cats visibility 1/8 mile.	MISSED APPROACH: Climb to 3000 direct YITAY and hold.
---	---

ADU AWOS-3 <b>118.075</b>	DES MOINES APP CON <b>135.2 360.7</b>	UNICOM <b>122.8</b> (CTAF) <b>0</b>
------------------------------	--	--



3000	YITAY	VGSI and RNAV glidepath not coincident (VGSI Angle 3.25/TCH 33).		4 NM Holding Pattern
AWCEX	2800	177°	357°	3000
RWY 18	4.8 NM	5 NM		GP 3.00° TCH 40
CATEGORY	A	B	C	D
LPV DA	1531-1	310 (400-1)	NA	
LNAV/VNAV DA	1744-1 3/4	523 (600-1 3/4)	NA	
LNAV MDA	1720-1	499 (500-1)	NA	
CIRCLING	1740-1 519 (600-1)	1880-1 659 (700-1)	NA	