

LOC/DME I-BBG <b>111.35</b> Chan <b>50</b> (Y)	APP CRS <b>323°</b>	Rwy Idg <b>7140</b> TDZE <b>1302</b> Apt Elev <b>1302</b>
--	------------------------	---

ILS or LOC RWY 32  
BRANSON (BBG)

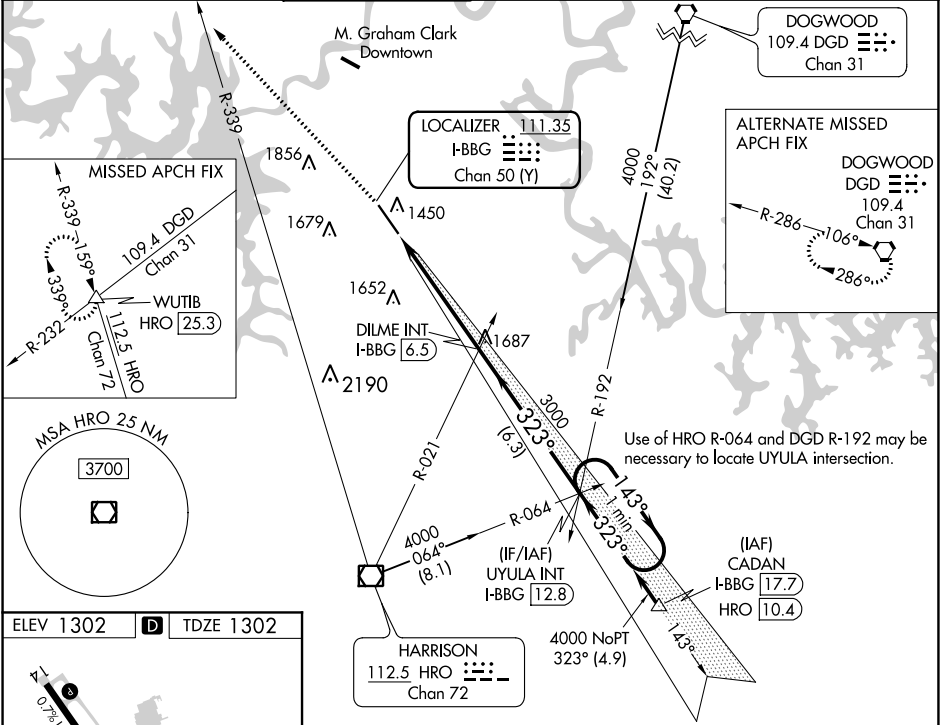
**NA**

Inoperative table does not apply.  
When local altimeter setting not received, use Harrison altimeter setting and increase all DA/MDA 60 feet and increase Circling Cat D visibility ¼ mile.  
VDP NA when using Harrison altimeter setting.

MALSF

MISSED APPROACH: Climb to 4000 on heading 315° and HRO VOR/DME R-339 to WUTIB INT/HRO 25.3 DME and hold.

ATIS <b>124.625</b>	SPRINGFIELD APP CON <b>126.35</b>	BRANSON TOWER ★ <b>128.15</b> (CTAF) <b>0</b>	GND CON <b>118.4</b>	CLNC DEL <b>118.4</b>	SPRINGFIELD CLNC DEL <b>126.35</b> (When tower closed)	UNICOM <b>122.95</b>
------------------------	--------------------------------------	--	-------------------------	--------------------------	--	-------------------------



ELEV 1302	<b>D</b>	TDZE 1302
-----------	----------	-----------

TWR ★

REIL Rwy 14 323° 5.1 NM from FAF

HIRL Rwy 14-32

FAF to MAP 5.1 NM

Knots	60	90	120	150	180
Min:Sec	5:06	3:24	2:33	2:02	1:42

<div>4000 ↑ hdg 315°</div>		<div>HRO R-339</div>		<div>WUTIB △</div>		<div>DILME INT I-BBG <u>6.5</u></div>		<div>UYULA INT I-BBG <u>12.8</u></div>		<div>One Minute Holding Pattern</div>	
*LOC only.		*I-BBG <u>2.7</u>		3000		323°		143°→		4000	
<div>I-BBG <u>1.4</u></div>		<div>I-BBG <u>1.3</u></div>		<div>3000</div>		323°←		GS 3.00° TCH 50			
CATEGORY		A		B		C		D			
S-ILS 32		1502-1		200 (200-1)							
S-LOC 32		1760-1		458 (500-1)		1760-1¼ 458 (500-1¼)		1760-1½ 458 (500-1½)			
CIRCLING		1760-1 458 (500-1)		1780-1 478 (500-1)		2220-2½ 918 (1000-2½)		2220-2¾ 918 (1000-2¾)			

NC-3, 31 DEC 2020 to 28 JAN 2021

NC-3, 31 DEC 2020 to 28 JAN 2021