

WAAS CH 70720 W17A	APP CRS 171°	Rwy Idg 5001 TDZE 348 Apt Elev 352
--	------------------------	---

RNAV (GPS) RWY 17

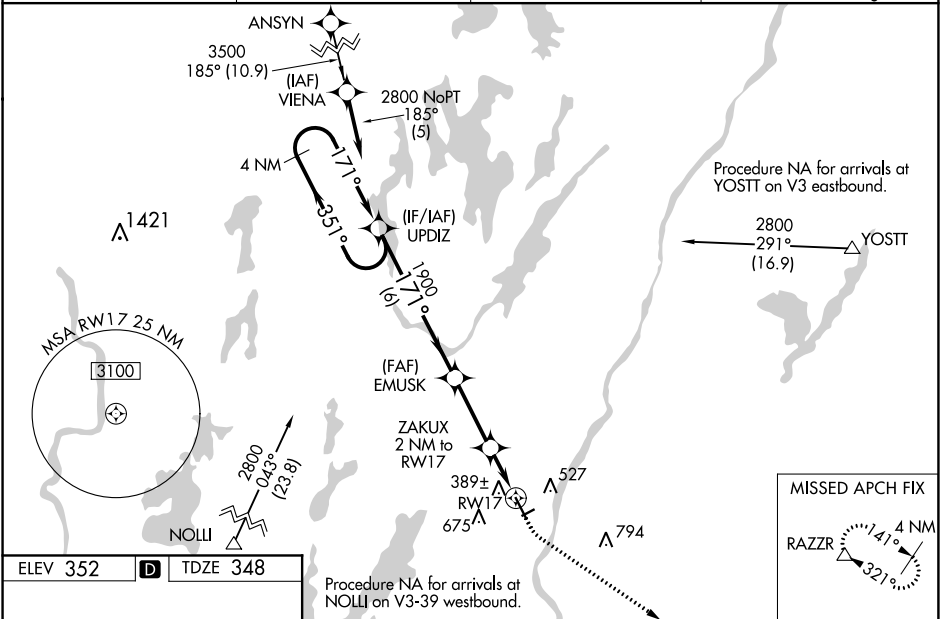
AUGUSTA STATE (AUG)

⚠ DME/DME RNP-0.3 NA. For inop MALSR, increase LNAV/VNAV all Cats visibility to 1 mile. For inop MALSR when using Waterville altimeter setting, increase LNAV/VNAV all Cats visibility to 1½ mile. VDP and Baro-VNAV NA with Waterville altimeter setting. When local altimeter setting not received, use Waterville altimeter setting: increase LPV DA to 583 feet, LNAV/VNAV DA to 710 feet, and visibility LNAV/VNAV all Cats ½ SM; increase all MDA 40 feet and visibility LNAV Cats C and D ½ SM, and Circling Cat D ¼ SM. For uncompensated Baro-VNAV systems, LNAV/VNAV NA below -30°C (-22°F) or above 41°C (105°F). Rwy 8, 26 helicopter visibility below 1 SM NA. Circling Rwy 8 and 26 NA at night. When VGSi inop, Circling Rwy 35 NA at night.

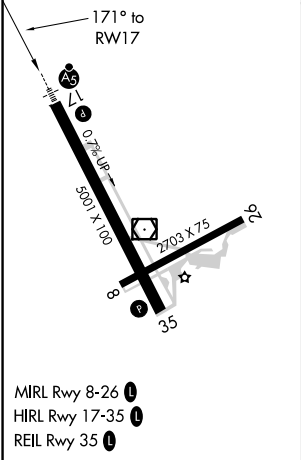
MALSR

MISSED APPROACH:
Climb to 800 then
climbing left turn to
3000 direct RAZZR
and hold.

ASOS 118.325	PORTLAND APP CON ★ 128.35 299.2	CLNC DEL 119.95 299.2	UNICOM 123.0 (CTAF) 0
------------------------	---	---------------------------------	---------------------------------



ELEV 352	D	TDZE 348
----------	----------	----------



4 NM Holding Pattern UPDIZ				VGSI and RNAV glidepath not coincident (VGSI Angle 3.00/TCH 53).				800	3000	RAZZR
2800				EMUSK				*LNAV only.		
GP 3.00° TCH 60				1900				ZAKUX 2 NM to RW17 to RW17		
				*1000				1.1 NM 0.9		
CATEGORY				A	B	C	D			
LPV DA				548-½ 200 (200-½)						
LNAV/VNAV DA				675-5/8 327 (400-5/8)						
LNAV MDA				640-½ 292 (300-½)						
C CIRCLING				960-1 608 (700-1)	980-1 628 (700-1)	980-1¾ 628 (700-1¾)	1160-2½ 808 (900-2½)			

NE-1, 31 DEC 2020 to 28 JAN 2021

NE-1, 31 DEC 2020 to 28 JAN 2021