

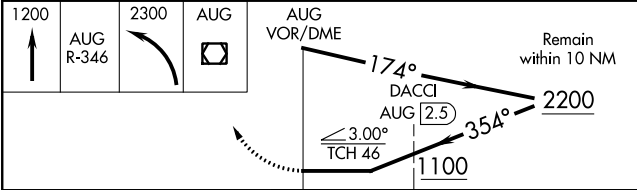
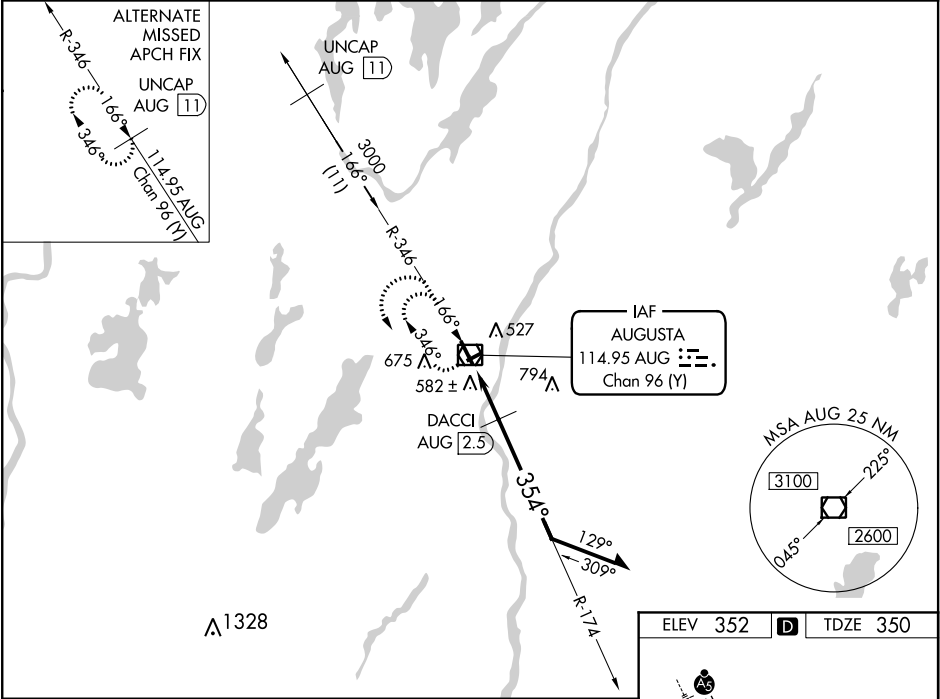
VOR/DME AUG	APP CRS	Rwy Idg	5001
114.95	354°	TDZE	350
Chan 96 (Y)		Apt Elev	352

VOR RWY 35
AUGUSTA STATE (AUG)

▼ Visibility reduction by helicopters NA. When local altimeter setting not received, use Waterville altimeter setting: increase all MDA 40 feet and visibility S-35 Cats C and D ½ SM, and Circling Cat D ¼ SM; DACC1 fix minimums increase visibility S-35 Cats C and D ⅛ SM, and Circling Cat D ¼ SM. When VGSI inop, Straight-in/Circling Rwy 35 procedure NA at night. Rwy 8, 26 helicopter visibility reduction below 1 SM NA. Circling Rwy 8, 26 NA at night.

MISSED APPROACH: Climb to 1200 on AUG VOR/DME R-346, then climbing left turn to 2300 direct AUG VOR/DME and hold.

ASOS 118.325	PORTLAND APP CON ★ 128.35 299.2	CLNC DEL 119.95 299.2	UNICOM 123.0 (CTAF) 0
-----------------	------------------------------------	--------------------------	--------------------------



CATEGORY	A	B	C	D
S-35	1100-1 750 (800-1)	1100-1¼ 750 (800-1¼)	1100-2	750 (800-2)
CIRCLING	1100-1 748 (800-1)	1100-1¼ 748 (800-1¼)	1100-2¼ 748 (800-2¼)	1160-2½ 808 (900-2½)
DACC1 FIX MINIMUMS				
S-35	840-1	490 (500-1)	840-1⅜	490 (500-1⅜)
CIRCLING	960-1 608 (700-1)	980-1 628 (700-1)	980-1¾ 628 (700-1¾)	1160-2½ 808 (900-2½)

