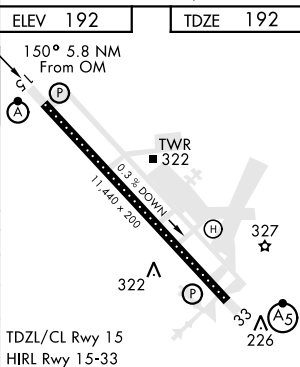


BANGOR INTL (KBGR)

MISSED APPROACH: Climb to 3000 via heading 150° and BGR VORTAC R-154 to ELSUH (R-154/18.3 DME) and hold.

ASR

EMERG SAFE ALT 100 NM 7500



BANGOR INTL (KBGR)

HI-ILS or LOC Z RWY 15

NE-1, 31 DEC 2020 to 28 JAN 2021