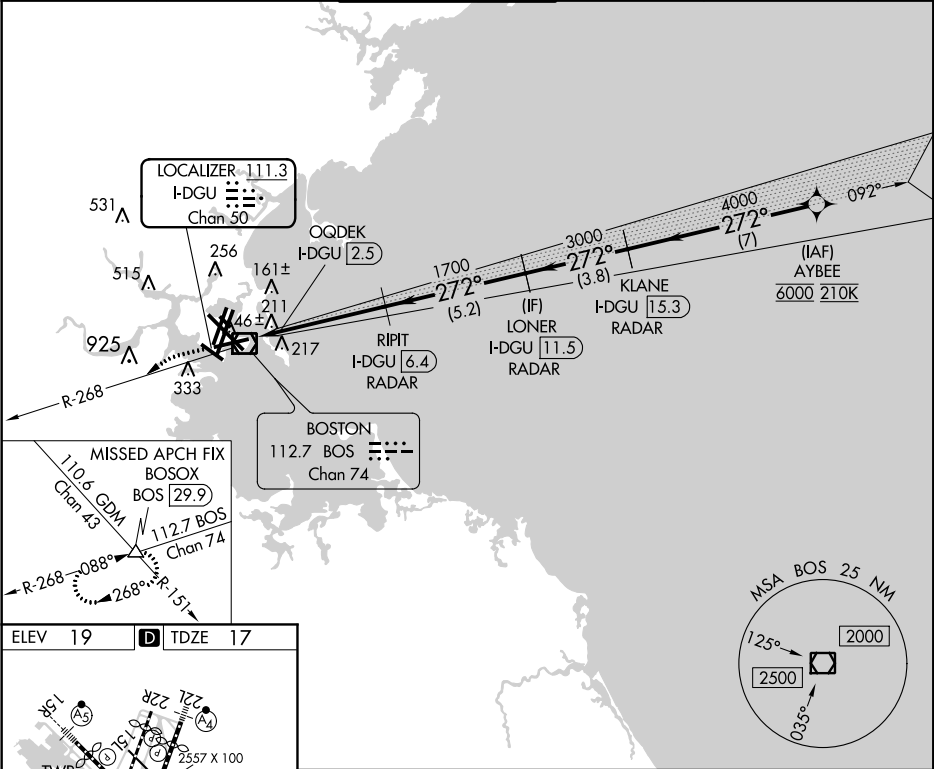


LOC/DME I-DGU	APP CRS	Rwy Idg	7001
111.3	272°	TDZE	17
Chan 50		Apt Elev	19

ILS or LOC RWY 27

GENERAL EDWARD LAWRENCE LOGAN INTL (BOS)

DME or RADAR required. RADAR required for procedure entry. From AYBEE: RNAV 1-GPS required.		MISSED APPROACH: Climb to 3000 on BOS VOR/DME R-268 to BOSOX INT/BOS 29.9 DME and hold.		
▼ Circling NA to Rwy 14. ▲ Circling NA for Cats C and D west of Rwy 4L and 15R.				
D-ATIS	BOSTON APP CON	BOSTON TOWER	GND CON	CLNC DEL
135.0	120.6 263.1	128.8 257.8 (WEST) 132.225 257.8 (EAST)	121.9 121.75	121.65 257.8
				CPDLC



ELEV 19

TDZE 17

TDZ/CL Rwy 4R, 15R and 33L

REIL Rwy 4L, 27 and 32

MIRL Rwy 15L-33R

HIRL Rwy 4L-22R, 4R-22L, 9-27, 14-32 and 15R-33L

FAF to MAP 3.9 NM

Knots	60	90	120	150	180
Min:Sec	3:48	2:32	1:54	1:31	1:16

3000 BOSOX		VGSI and ILS glidepath not coincident (VGSI Angle 3.00/TCH 71).			
BOS R-268		RIPIT I-DGU [6.4] RADAR	LONER I-DGU [11.5] RADAR	KLANE I-DGU [15.3] RADAR	AYBEE
QOQDEK I-DGU [2.5]		1700	3000	4000	6000
1.2		3.9 NM	5.2 NM	3.8 NM	7 NM
CATEGORY	A	B	C	D	
S-ILS 27	460-1½		443 (500-1½)		
S-LOC 27	460-1½		443 (500-1½)		
CIRCLING	940-1½		1040-1½		620-1¾
	921 (1000-1½)		1021 (1100-1½)		601 (700-1¾)
				620-2	
				601 (700-2)	