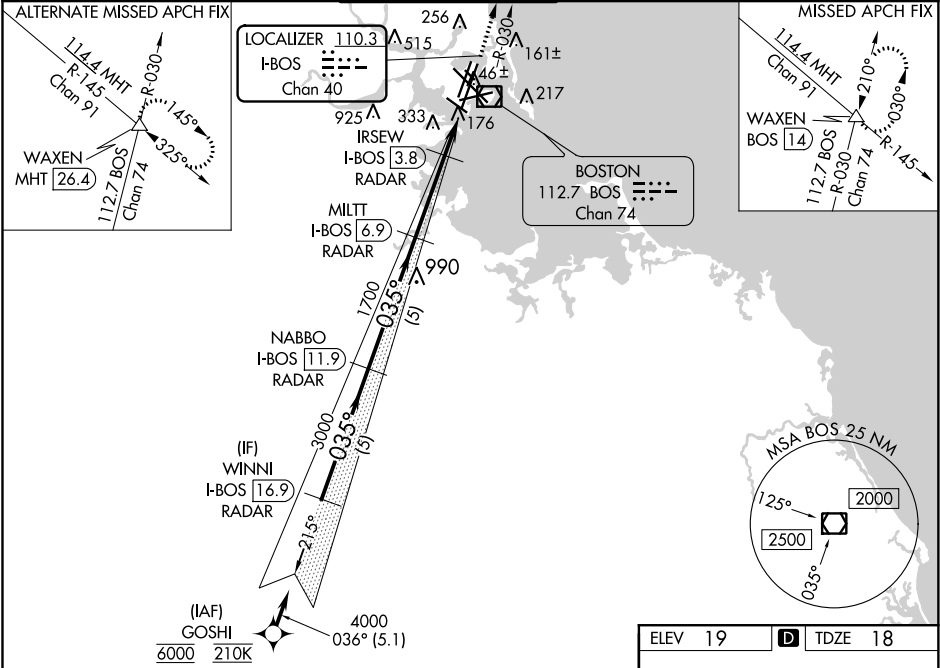


LOC/DME I-BOS	APP CRS	Rwy Idg	8851
110.3	035°	TDZE	18
Chan 40		Apt Elev	19

ILS or LOC RWY 4R
GENERAL EDWARD LAWRENCE LOGAN INTL (BOS)

RNAV 1-GPS or RADAR required for procedure entry. DME or RADAR required.	ALSF-2	MISSED APPROACH: Climb to 3000 on BOS VOR/DME R-030 to WAXEN INT/BOS 14 DME and hold.
<div># For inop ALS, increase S-LOC 4R Cat A/B visibility to RVR 5500; Rwy 4R helicopter visibility reduction below 4000 RVR NA. **When vessels taller than 144 feet present, S-ILS 4R NA.</div>	<div><div></div><div></div></div>	

D-ATIS	BOSTON APP CON	BOSTON TOWER	GND CON	CLNC DEL	CPDLC
135.0	120.6 263.1	128.8 257.8 (WEST) 132.225 257.8 (EAST)	121.9 121.75	121.65 257.8	



GOSHI	VGSI and ILS glidepath not coincident (VGSI Angle 3.00/TCH 67).	WINNI	I-BOS 16.9 RADAR	NABBO	I-BOS 11.9 RADAR	MILT	I-BOS 6.9 RADAR	IRSEW	I-BOS 3.8 RADAR	BOS R-030	WAXEN
6000	036°	4000	035°	3000	1700	*700					
GS 3.00° TCH 51	5.1 NM	5 NM	5 NM	3.1 NM	0.9 NM	1.1 NM					
CATEGORY	A	B	C	D							
S-ILS 4R		218/18	200 (200-½)								
S-LOC 4R		440/24	422 (500-½)	440/40	422 (500-¾)						
CIRCLING		940-1¼ 921 (1000-1¼)	1040-1½ 1021 (1100-1½)	620-1¾ 601 (700-1¾)	620-2 601 (700-2)						
** APPROACH MINIMA WHEN CONTROL TOWER REPORTS TALL VESSELS IN APPROACH AREA											
S-ILS 4R		374/40	356 (400-¾)								
S-LOC 4R #		440/40	422 (500-¾)								

