
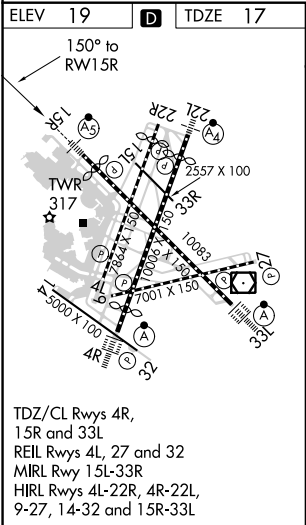
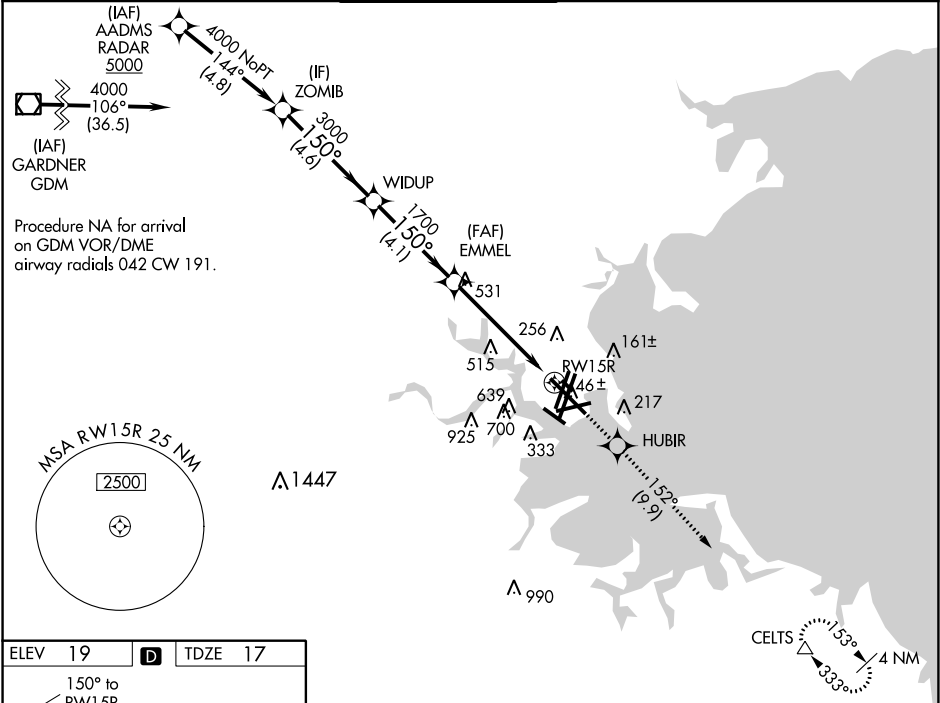


WAAS CH 42925 W15A	APP CRS 150°	Rwy Idg TDZE Apt Elev	9201 17 19
--	------------------------	-----------------------------	---------------------------------------

RNAV (GPS) RWY 15R

GENERAL EDWARD LAWRENCE LOGAN INTL (BOS)

RNP APCH.			MALSR		MISSED APPROACH: Climb to 3000 direct HUBIR and on track 152° to CELTS and hold.	
▼ For uncompensated Baro-VNAV systems, LNAV/VNAV NA below -15°C or above 54°C. Circling NA to Rwy 14. Circling NA for Cats C and D west of Rwy 4L and 15R. For inop ALS, increase LNAV Cats C and D visibility to 1½ SM.						
D-ATIS 135.0	BOSTON APP CON 120.6 263.1	BOSTON TOWER 128.8 257.8 (WEST) 132.225 257.8 (EAST)	GND CON 121.9 121.75		CLNC DEL 121.65 257.8	CPDLC



VGSi and RNAV glidepath not coincident (VGSi Angle 3.00/TCH 71).				
ZOMIB		WIDUP	EMMEL	HUBIR
4000		3000	1700	3000
GP 3.00° TCH 60		*1.7 NM to RWY 15R		
4.6 NM		4.1 NM	3.4 NM	1.7 NM
CATEGORY	A	B	C	D
LPV DA	217/18		200 (200-½)	
LNAV/VNAV DA	567-1⅞		550 (600-1⅞)	
LNAV MDA	620/24	603 (700-½)	620-1⅜	603 (700-1⅜)
CIRCLING	940-1¼ 921 (1000-1¼)	1040-1½ 1021 (1100-1½)	620-1¾ 601 (700-1¾)	620-2 601 (700-2)