
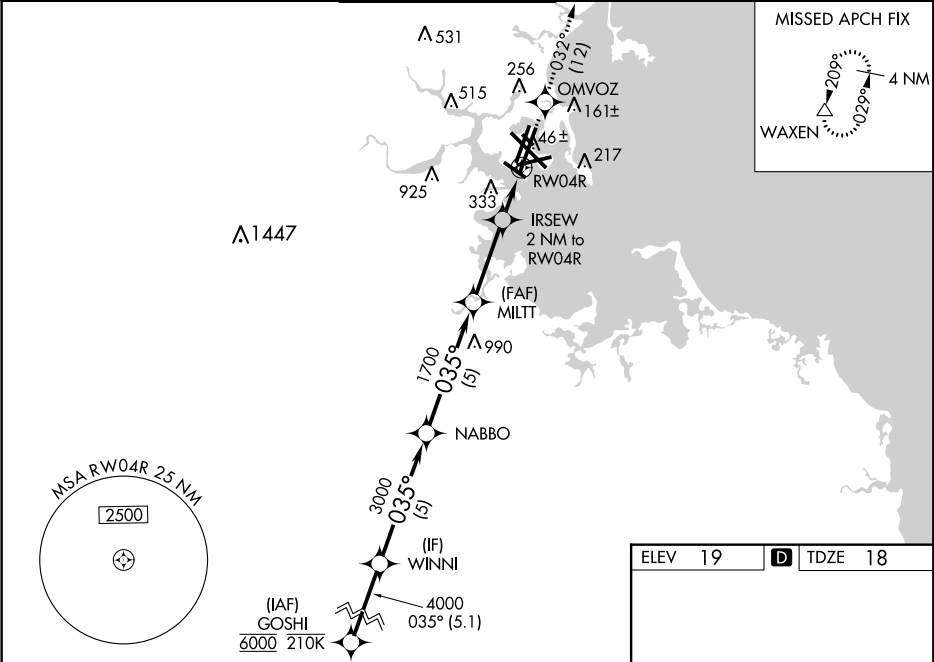


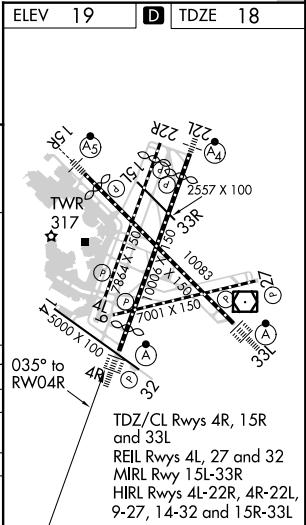
WAAS CH 50124 W04A	APP CRS 035°	Rwy Idg 8851 TDZE 18 Apt Elev 19
--	------------------------	---

RNAV (GPS) RWY 4R
GENERAL EDWARD LAWRENCE LOGAN INTL (BOS)

RNP APCH. ▼ Circling NA to Rwy 14. Circling NA for Cats C/D west of Rwy 4L and 15R. ▲ For inop ALS increase LNAV/VNAV all Cats visibility to 1 3/4 SM. When control tower reports tall vessels in approach area: increase LPV DA to 374 and all Cats visibility to RVR 4000, increase LNAV Cat A/B visibility to RVR 4000; for inop ALS with tall vessels increase LNAV/VNAV all Cats visibility to 1 3/4 SM, LNAV Cat A/B visibility to RVR 5500 and LNAV Cat C/D to 1 3/4 SM. For tall vessels Rwy 4R helicopter visibility reduction below RVR 4000 NA. When vessels taller than 144 feet present, LPV and LNAV/VNAV NA. For uncompensated Baro-VNAV systems, LNAV/VNAV NA below -16°C or above 54°C.				ALSF-2 	MISSED APPROACH: Climb to 3000 direct OMVOZ and on track 032° to WAXEN and hold.	
D-ATIS 135.0	BOSTON APP CON 120.6 263.1	BOSTON TOWER 128.8 257.8 (WEST) 132.225 257.8 (EAST)	GND CON 121.9 121.75	CLNC DEL 121.65 257.8	CPDLC	



VGSI and RNAV glidepath not coincident (VGSI Angle 3.00/TCH 67). GOSHI WINNI NABBO MILTT IRSEW 2 NM to RW04R *1.2 NM to RW04R GP 3.00° TCH 51 6000 4000 3000 1700 *700 RW04R 5.1 NM 5 NM 5 NM 3.1 NM 0.8 1.2					3000 OMVOZ tr 032° WAXEN
CATEGORY	A	B	C	D	
LPV DA		218/18	200 (200-1/2)		
LNAV/VNAV DA		514/50	496 (500-1)		
LNAV MDA	480/24	462 (500-1/2)	480/50	462 (500-1)	
CIRCLING	940-1 1/4 921 (1000-1 1/4)	1040-1 1/2 1021 (1100-1 1/2)	620-1 3/4 601 (700-1 3/4)	620-2 601 (700-2)	



NE-1, 31 DEC 2020 to 28 JAN 2021

NE-1, 31 DEC 2020 to 28 JAN 2021