
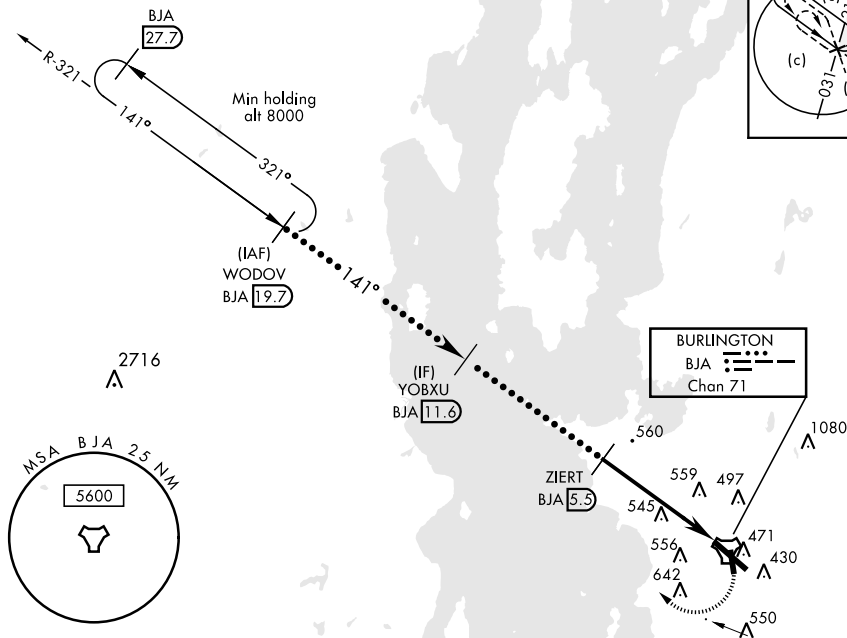


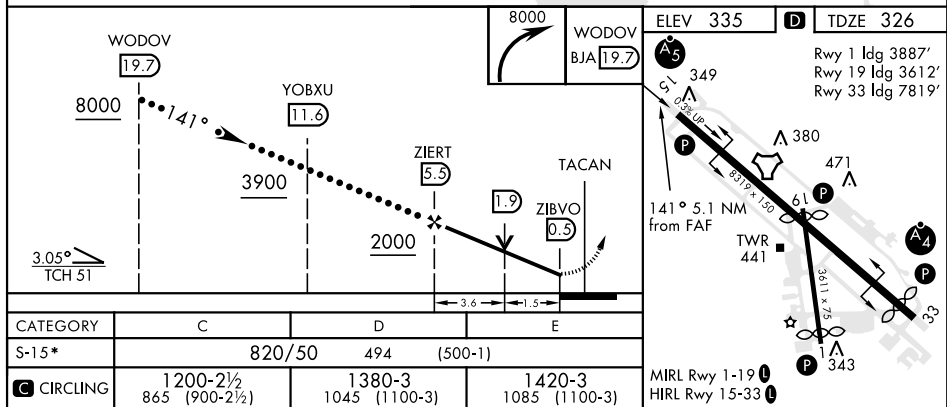
HI-TACAN RWY 15

TACAN BJA Chan 71	APCH CRS 141°	Rwy Idg 7819 TDZE 326 Arpt Elev 335	JAL-70 [USAF]	BURLINGTON INTL (KBTV)
<div> <div>▼</div> <div>▲</div> </div> Night Landing: RWY 1 NA. *When ALS inop, increase CAT C/D/E vis to 1½ mile.			 MALS	MISSED APPROACH: Climbing right turn to 8000 on BJA R-321 to WODOV / BJA 19.7 DME and hold, continue climb-in-hold to 8000.
ATIS 123.8 269.9	BURLINGTON APP CON 121.1 278.8	BURLINGTON TOWER★ 118.3 (CTAF) 0257.8	GND CON 126.3 348.6	CLNC DEL 119.15



NOT FOR CIVIL USE

EMERG SAFE ALT 100 NM 8500



BURLINGTON, VERMONT

44°28'N-73°09'W

BURLINGTON INTL (KBTU)

Orig 24MAY18

HI-TACAN RWY 15

NE-1, 31 DEC 2020 to 28 JAN 2021

NE-1, 31 DEC 2020 to 28 JAN 2021