


WAAS CH 65812 W33A	APP CRS 326°	Rwy Idg 7819 TDZE 335 Apt Elev 335
--	------------------------	---

RNAV (GPS) Z RWY 33
BURLINGTON INTL (BTV)

RNP APCH.

 Inoperative table does not apply. For uncompensated Baro-VNAV systems, LNAV/VNAV NA below -15°C (5°F) or above 54°C (130°F). Rwy 33 helicopter visibility reduction below ¾ SM NA.

MALSF



MISSED APPROACH: Climb to 3000
direct STAEV and hold.

ATIS 123.8 269.9	BURLINGTON APP CON ★ 121.1 278.8	BURLINGTON TOWER ★ 118.3 (CTAF) 0 257.8	GND CON 126.3 348.6	CLNC DEL 119.15	UNICOM 122.95
---------------------	-------------------------------------	--	------------------------	--------------------	------------------

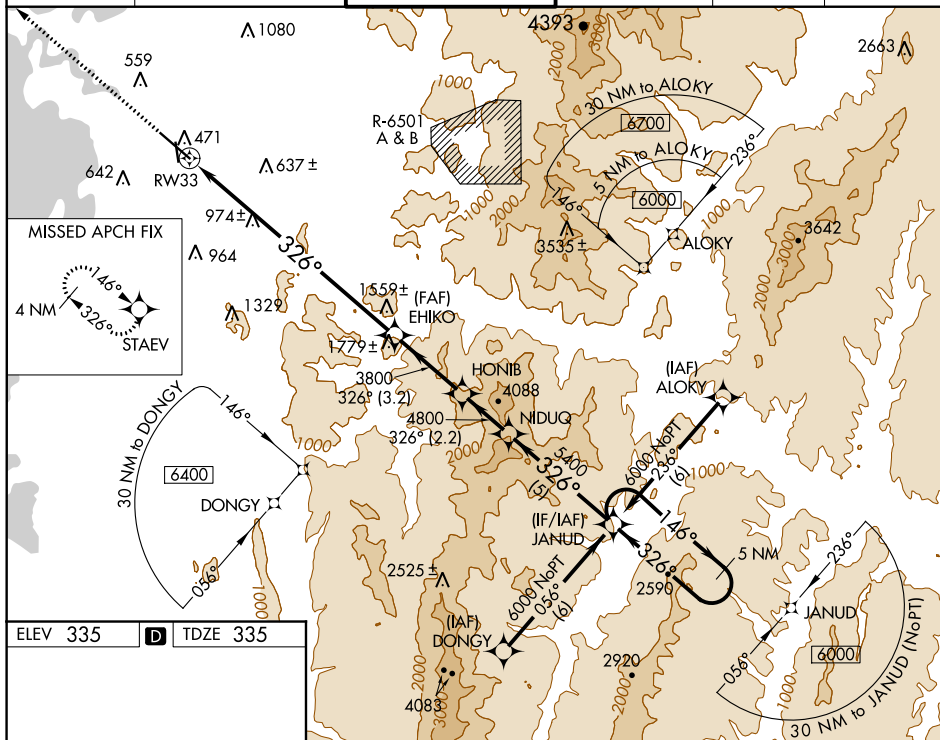


Diagram illustrating the RW33 approach procedure, showing the runway, navigation aids, and the descent path.

Key features and data points:

- Runway: RW33, 326° to RW33.
- Navigation Aids: TWR 441, A112N, A5, A6, A7, A8, A9, A10, A11, A12, A13, A14, A15, A16, A17, A18, A19, A20, A21, A22, A23, A24, A25, A26, A27, A28, A29, A30, A31, A32, A33, A34, A35, A36, A37, A38, A39, A40, A41, A42, A43, A44, A45, A46, A47, A48, A49, A50, A51, A52, A53, A54, A55, A56, A57, A58, A59, A60, A61, A62, A63, A64, A65, A66, A67, A68, A69, A70, A71, A72, A73, A74, A75, A76, A77, A78, A79, A80, A81, A82, A83, A84, A85, A86, A87, A88, A89, A90, A91, A92, A93, A94, A95, A96, A97, A98, A99, A100.
- Descent Path: 3000, 3800, 4800, 5400, 6000.
- Distances: 4.8 NM, 5 NM, 3.2 NM, 2.2 NM, 5 NM.
- GP 3.20° TCH 55.

CATEGORY	A	B	C	D	E
LPV DA	535/40	200 (200-¾)	585/50	250 (300-1)	
LNAV/VNAV DA	1782-5 1447 (1500-5)				
LNAV MDA	2000/60 1665 (1700-1¼)	2000-1½ 1665 (1700-1½)	2000-3 1665 (1700-3)		

BURLINGTON, VERMONT

Orig-B 07NOV19

BURLINGTON INTL (BTV)

RNAV (GPS) Z RWY 33

44°28'N-73°09'W

NE-1, 31 DEC 2020 to 28 JAN 2021

NE-1, 31 DEC 2020 to 28 JAN 2021