

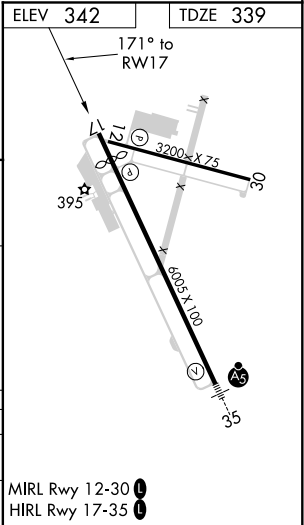
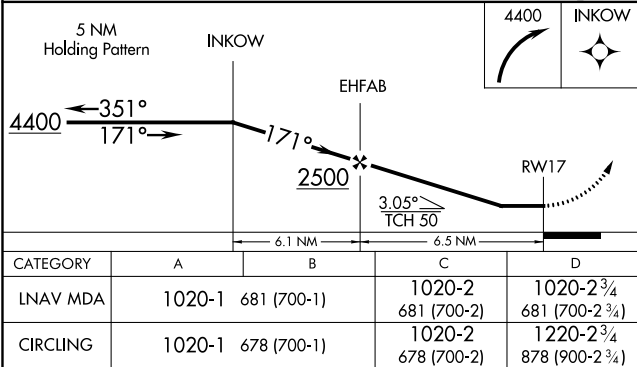
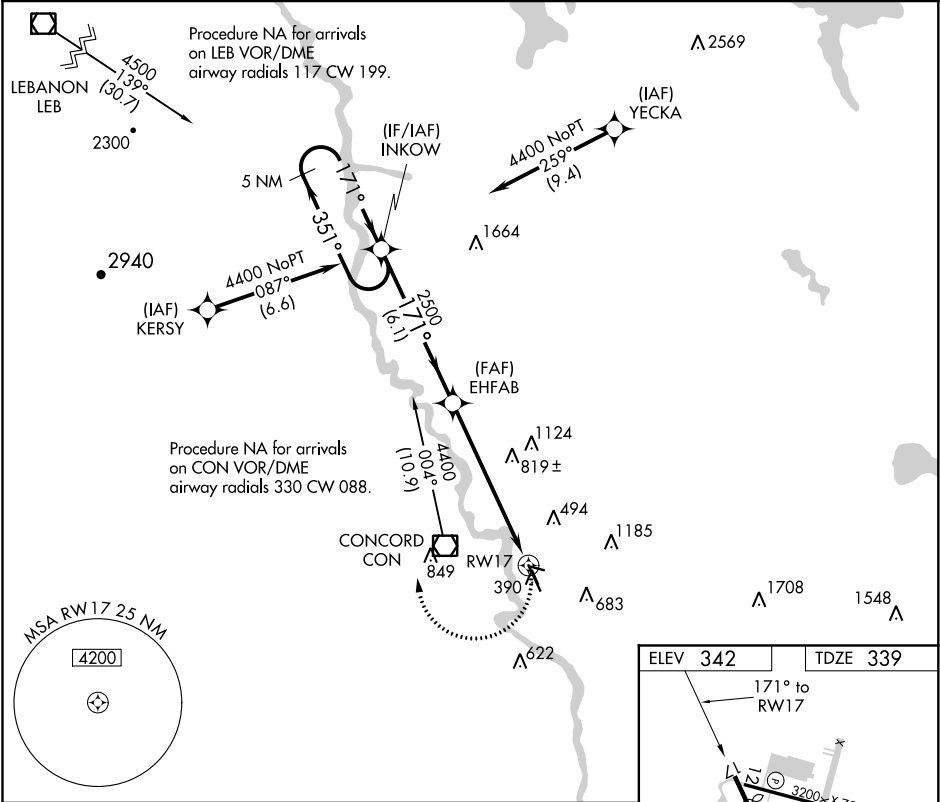
APP CRS	Rwy Idg	5364
171°	TDZE	339
	Apt Elev	342

RNAV (GPS) RWY 17
CONCORD MUNI (CON)

⚠ DME/DME RNP-0.3 NA. Straight-in Rwy 17 NA at night/Circling Rwy 12/30 NA at night. Rwy 12/17/30 helicopter visibility reduction below 1 SM NA. Rwy 35 helicopter visibility reduction below ¼ SM NA.

MISSED APPROACH: Climbing right turn to 4400 direct INKOW and hold, continue climb-in-hold to 4400.

ASOS 132.325	BOSTON APP CON 127.35 269.075	CLNC DEL 133.65	UNICOM 122.7 (CTAF) 0
-----------------	----------------------------------	--------------------	---------------------------------



NE-1, 31 DEC 2020 to 28 JAN 2021

NE-1, 31 DEC 2020 to 28 JAN 2021