

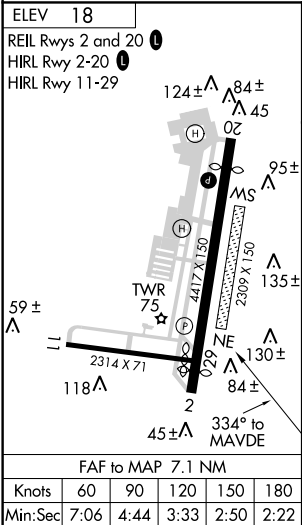
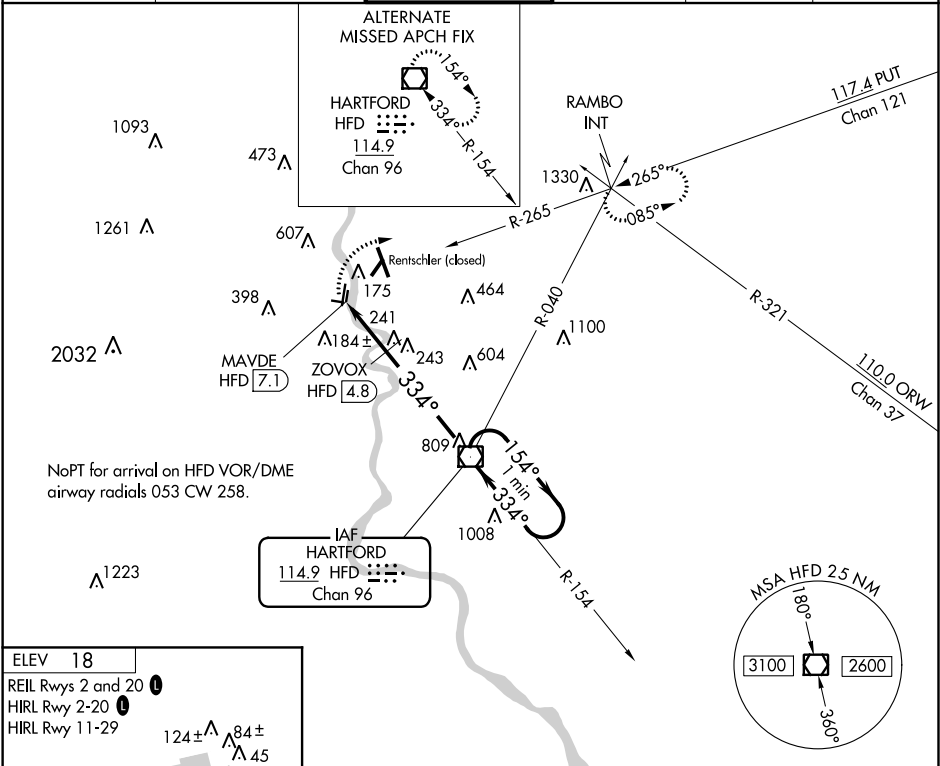
VOR/DME HFD	APP CRS	Rwy Idg	N/A
114.9	334°	TDZE	N/A
Chan 96		Apt Elev	18

VOR-A

HARTFORD-BRAINARD (HF'D)

<p>▼ Helicopter visibility reduction below 1 SM NA. When Rwy 2 VGSi inop, Circling to Rwy 2 NA at night. Circling to Rwy 11 and 29 NA at night. When Rwy 20 VGSi inop, Circling to Rwy 20 NA at night.</p>	<p>MISSED APPROACH: Climbing right turn to 2500 on heading 100° and PUT VOR/DME R-265 to RAMBO INT and hold.</p>
---	--

ATIS 126.45	YANKEE APP CON 127.8 269.325	BRAINARD TOWER ★ 119.6 (CTAF) 0 248.2	GND CON 121.6	CLNC DEL 121.6	UNICOM 122.95
-----------------------	--	---	-------------------------	--------------------------	-------------------------



<p>2500 hdg 100°</p>	<p>PUT R-265</p>	<p>RAMBO INT</p>	<p>HFD VOR/DME</p>	<p>One Minute Holding Pattern</p>
<p>2500</p>	<p>1200</p>	<p>1200</p>	<p>2500</p>	
<p>2.3 NM</p>	<p>4.8 NM</p>			
CATEGORY	A	B	C	D
CIRCLING	1200-1¼ 1182 (1200-1¼)	1200-1½ 1182 (1200-1½)	1200-3 1182 (1200-3)	
ZOVOX FIX MINIMUMS (DME REQUIRED)				
CIRCLING	580-1	562 (600-1)	900-2¾ 882 (900-2¾)	920-3 902 (1000-3)

NE-1, 31 DEC 2020 to 28 JAN 2021

NE-1, 31 DEC 2020 to 28 JAN 2021