

WAAS CH 78328 W11A	APP CRS 107°	Rwy Idg TDZE Apt Elev	4713 408 408
--	------------------------	-----------------------------	---

RNAV (GPS) RWY 11

MILLINOCKET MUNI (MLT)

RNP APCH.

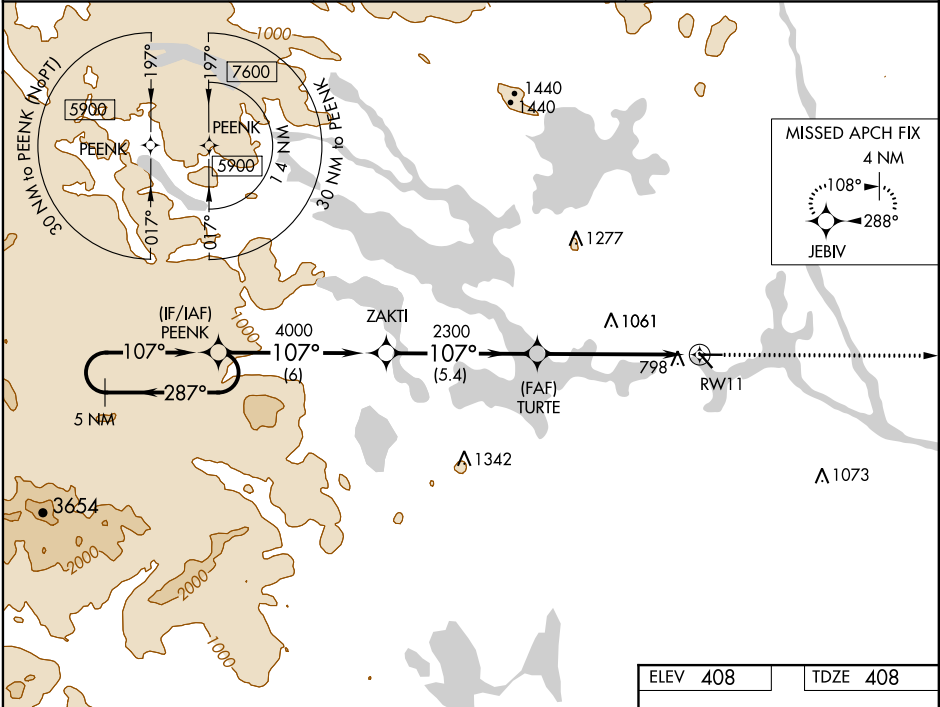
▼

⚠

Baro-VNAV NA when using Houlton altimeter setting. For uncompensated Baro-VNAV systems, LNAV/VNAV NA below -15°C or above 41°C. Rwy 11 helicopter visibility reduction below 1 SM NA. When local altimeter setting not received, use Houlton altimeter setting and increase all DA and MDA 120 feet; increase LPV and LNAV/VNAV visibility all Cats ½ SM and LNAV visibility Cat B ¼ SM and Cat C/D ½ SM. Procedure NA at night.

MISSED APPROACH:
Climb to 2300 direct JEBIV and hold.

ASOS 135.225	BOSTON CENTER 120.25 346.4	UNICOM 122.8 (CTAF)
------------------------	--------------------------------------	-------------------------------



5 NM Holding Pattern

PEENK

5900

287°

107°

GP 3.00° TCH 51

2300

JEBIV

↑

✦

5 NM

6 NM

5.4 NM

5.8 NM

5900

4000

2300

107°

287°

ZAKTI

TURTE

RW11

CATEGORY	A	B	C	D
LPV DA	929-13/4 521 (600-13/4)			
LNAV/VNAV DA	1004-2 596 (600-2)			
LNAV MDA	1100-1 692 (700-1)		1100-2 692 (700-2)	

ELEV 408

TDZE 408

4713 X 99

4000 X 100

0.3% UP

107° to RW11

REIL Rwy 29

MIRL Rwy 11-29

NE-1, 31 DEC 2020 to 28 JAN 2021

NE-1, 31 DEC 2020 to 28 JAN 2021