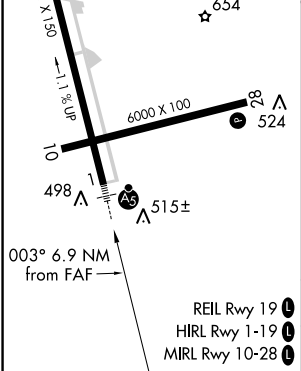
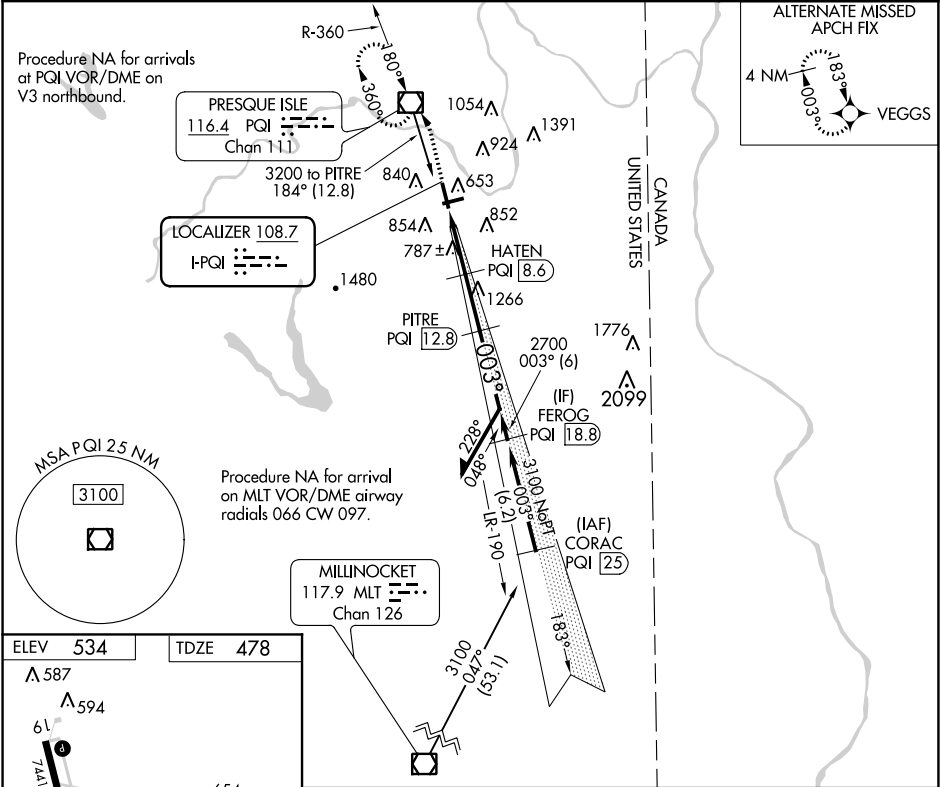

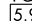
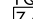


LOC I-PQI <b>108.7</b>	APP CRS <b>003°</b>	Rwy ldg <b>7441</b>
	TDZE <b>478</b>	
	Apt Elev <b>534</b>	

ILS or LOC RWY 1  
PRESQUE ISLE INTL (PQI)

DME required for LOC only.			MALSR 	MISSED APPROACH: Climb to 1100 then climbing left turn to 3000 direct PQI VOR/DME and hold, continue climb-in-hold to 3000.
For inop ALS, increase S-LOC Cat C/D visibility to 1½ SM. DME from PQI VOR/DME. Simultaneous reception of I-PQI and PQI DME required.				
AWOS-3PT <b>118.025</b>	BOSTON CENTER <b>124.75 239.05</b>	CLNC DEL <b>121.6</b>	UNICOM <b>122.8 (CTAF)</b>	<b>122.6</b>



1100 ↑		3000 ↖		PQI 		PITRE PQI 12.8		Remain within 10 NM			
*LOC only			HATEN PQI 9.7		2700		183°		3200		
PQI 5.9 		*PQI 7.6 		*1700		2700		003°		GS 3.00° TCH 50	
1.7		2.1		3.1 NM							
CATEGORY		A		B		C		D			
S-ILS 1				678-½		200 (200-½)					
S-LOC 1		1040-½		562 (600-½)		1040-1¼		562 (600-1¼)			
CIRCLING		1140-1 606 (700-1)		1160-1 626 (700-1)		1300-2¼ 766 (800-2¼)		1360-2¾ 826 (900-2¾)			

NE-1, 31 DEC 2020 to 28 JAN 2021

NE-1, 31 DEC 2020 to 28 JAN 2021